

# Web Services Reliable Messaging Protocol (WS-ReliableMessaging)

March 2004

## Authors

Ruslan Bilorusets, BEA  
Adam Bosworth, BEA  
Don Box, Microsoft  
Luis Felipe Cabrera, Microsoft  
Derek Collison, TIBCO Software  
Donald Ferguson, IBM  
Christopher Ferris, IBM (Editor)  
Tom Freund, IBM  
Mary Ann Hondo, IBM  
John Ibbotson, IBM  
Chris Kaler, Microsoft  
David Langworthy, Microsoft (Editor)  
Amelia Lewis, TIBCO Software  
Rodney Limprecht, Microsoft  
Steve Lucco, Microsoft  
Matt Mihic, BEA  
Don Mullen, TIBCO Software  
Anthony Nadalin, IBM  
Mark Nottingham, BEA  
David Orchard, BEA  
Shivajee Samdarshi, TIBCO Software  
John Shewchuk, Microsoft  
Tony Storey, IBM

## Copyright Notice

(c) 2002-2004 [BEA Systems Inc.](#), [International Business Machines Corporation](#), [Microsoft Corporation, Inc.](#), and [TIBCO Software Inc.](#). All rights reserved.

BEA Systems, IBM, Microsoft, and TIBCO Software (collectively, the "Authors") hereby grant you permission to copy and display the WS-ReliableMessaging Specification (the Specification), in any medium without fee or royalty, provided that you include the following on ALL copies of the Specification, or portions thereof, that you make:

1. A link or URL to the Specification at this location.
2. The copyright notice as shown in the WS-ReliableMessaging Specification.

EXCEPT FOR THE COPYRIGHT LICENSE GRANTED ABOVE, THE AUTHORS DO NOT GRANT, EITHER EXPRESSLY OR IMPLIEDLY, A LICENSE TO ANY INTELLECTUAL PROPERTY, INCLUDING PATENTS, THEY OWN OR CONTROL.

THE SPECIFICATION IS PROVIDED "AS IS," AND THE AUTHORS MAKE NO REPRESENTATIONS OR WARRANTIES, EXPRESS OR IMPLIED, INCLUDING, BUT NOT LIMITED TO, WARRANTIES OF MERCHANTABILITY, FITNESS FOR A PARTICULAR

PURPOSE, NON-INFRINGEMENT, OR TITLE; THAT THE CONTENTS OF THE SPECIFICATION ARE SUITABLE FOR ANY PURPOSE; NOR THAT THE IMPLEMENTATION OF SUCH CONTENTS WILL NOT INFRINGE ANY THIRD PARTY PATENTS, COPYRIGHTS, TRADEMARKS OR OTHER RIGHTS.

THE AUTHORS WILL NOT BE LIABLE FOR ANY DIRECT, INDIRECT, SPECIAL, INCIDENTAL OR CONSEQUENTIAL DAMAGES ARISING OUT OF OR RELATING TO ANY USE OR DISTRIBUTION OF THE SPECIFICATION.

The Specification may change before final release and you are cautioned against relying on the content of this Specification.

The name and trademarks of the Authors may NOT be used in any manner, including advertising or publicity pertaining to the Specification or its contents without specific, written prior permission. Title to copyright in the Specification will at all times remain with the Authors.

No other rights are granted by implication, estoppel or otherwise.

## **Abstract**

This specification (WS-ReliableMessaging) describes a protocol that allows messages to be delivered reliably between distributed applications in the presence of software component, system, or network failures. The protocol is described in this specification in a transport-independent manner allowing it to be implemented using different network technologies. To support interoperable Web services, a SOAP binding is defined within this specification.

The protocol defined in this specification depends upon other Web services specifications for the identification of service endpoint addresses and policies. How these are identified and retrieved are detailed within those specifications and are out of scope for this document.

## **Composable Architecture**

By using the SOAP [[SOAP](#)] and WSDL [[WSDL](#)] extensibility model, SOAP-based and WSDL-based specifications are designed to be composed with each other to define a rich Web services environment. As such, WS-ReliableMessaging by itself does not define all the features required for a complete messaging solution. WS-ReliableMessaging is a building block that is used in conjunction with other specifications and application-specific protocols to accommodate a wide variety of protocols related to the operation of distributed Web services.

## **Status**

WS-ReliableMessaging and related specifications are provided for use as-is and for review and evaluation only. BEA, IBM, Microsoft, and TIBCO Software will solicit your contributions and suggestions in the near future. BEA, IBM, Microsoft, and TIBCO Software make no warranties or representations regarding the specification in any manner whatsoever.

## Acknowledgements

The following individuals have provided invaluable input into the design of the WS-ReliableMessaging specification:

Keith Ballinger, Microsoft  
Allen Brown, Microsoft  
Michael Conner, IBM  
Francisco Curbera, IBM  
Steve Graham, IBM  
Pat Helland, Microsoft  
Rick Hill, Microsoft  
Scott Hinkelman, IBM  
Tim Holloway, IBM  
Efim Hudis, Microsoft  
Johannes Klein, Microsoft  
Frank Leymann, IBM  
Martin Nally, IBM  
Peter Niblett, IBM  
Jeffrey Schlimmer, Microsoft  
James Snell, IBM  
Keith Stobie, Microsoft  
Satish Thatte, Microsoft  
Stephen Todd, IBM  
Sanjiva Weerawarana, IBM  
Roger Wolter, Microsoft

We wish to thank the participants of the WS-ReliableMessaging Feedback and Interop Workshops for their valuable feedback.

We also wish to thank the technical writers and development reviewers who provided feedback to improve the readability of the specification.

## Table of Contents

### 1. Introduction

1.1 Notational Conventions

1.2 Namespace

### 2. Reliable Messaging Model

2.1 Glossary

2.2 Protocol Preconditions

2.3 Protocol Invariants

2.4 Example Message Exchange

### 3. RM Protocol Elements

3.1 Sequences

3.2 Sequence Acknowledgement

3.3 Request Acknowledgement

3.4 Sequence Creation

3.5 Sequence Termination

#### **4. Policy Assertions**

4.1 Spec Version

4.2 Sequence Creation

4.3 Sequence Expiration

4.4 InactivityTimeout

4.5 Retransmission Interval

4.6 Acknowledgement Interval

#### **5. Attaching Policy Assertions to Sequences**

5.1 SequenceRef

5.2 Metadata Exchange

#### **6. Faults**

6.1 SequenceFault Element

6.2 Sequence Terminated

6.3 Unknown Sequence

6.4 Invalid Acknowledgement

6.5 Message Number Rollover

6.6 Last Message Number Exceeded

6.7 Sequence Refused

6.8 Create Sequence Refused

#### **7. Security Considerations**

#### **8. References**

#### **Appendix A Example Timing Profile**

#### **Appendix B Schema**

#### **Appendix C Message Examples**

C.1 Create Sequence

C.2 Initial Transmission

C.3 First Acknowledgement

C.4 Retransmission

C.5 Termination

#### **Appendix D WSDL**

# 1. Introduction

It is often a requirement for two Web services that wish to communicate to do so reliably in the presence of software component, system, or network failures. The primary goal of this specification is to create a modular mechanism for reliable message delivery. It defines a messaging protocol to identify, track, and manage the reliable delivery of messages between exactly two parties, a source and a destination. It also defines a SOAP binding that is required for interoperability. Additional bindings may be defined.

This mechanism is extensible allowing additional functionality, such as security, to be tightly integrated. This specification integrates with and complements the WS-Security, WS-Policy, and other Web services specifications. Combined, these allow for a broad range of reliable, secure messaging options.

## 1.1 Notational Conventions

The keywords "MUST", "MUST NOT", "REQUIRED", "SHALL", "SHALL NOT", "SHOULD", "SHOULD NOT", "RECOMMENDED", "MAY", and "OPTIONAL" in this document are to be interpreted as described in RFC2119 [[KEYWORDS](#)].

Namespace URIs of the general form "some-URI" represents some application-dependent or context-dependent URI as defined in RFC2396 [[URI](#)].

This specification uses an informal syntax to describe the XML grammar of the XML fragments below:

- The syntax appears as an XML instance, but the values indicate the data types instead of values.
- Element names ending in "..." (such as `<element.../>` or `<element...>`) indicate that attributes irrelevant to the context are being omitted.
- Element content ending in "..." indicates that elements irrelevant to the context are being omitted.
- Grammar in bold has not been introduced earlier in the document, or is of particular interest in an example.
- Characters are appended to elements and attributes as follows: "|" (choice), "?" (0 or 1), "\*" (0 or more), "+" (1 or more). The characters "[" and "]" are used to indicate that contained items are to be treated as a group with respect to the "|", "?", "\*", or "+" characters.
- The XML namespace prefixes (defined below) are used to indicate the namespace of the element being defined.
- Examples starting with `<?xml>` contain enough information to conform to this specification; others examples are fragments and require additional information to be specified in order to conform.

XSD schemas and WSDL definitions are provided as a formal definition of grammars [[xml-schema1](#)] [[WSDL](#)].

## 1.2 Namespace

The XML namespace [[XML-ns](#)] URI that MUST be used by implementations of this specification is:

```
http://schemas.xmlsoap.org/ws/2004/03/rm
```

The namespace prefix "wsrm" used in this specification is associated with this URI.

The following namespaces are used in this document:

Prefix	Namespace
S	<a href="http://www.w3.org/2003/05/soap-envelope">http://www.w3.org/2003/05/soap-envelope</a>
S11	<a href="http://schemas.xmlsoap.org/soap/envelope/">http://schemas.xmlsoap.org/soap/envelope/</a>
wsrm	<a href="http://schemas.xmlsoap.org/ws/2004/03/rm">http://schemas.xmlsoap.org/ws/2004/03/rm</a>
wsu	<a href="http://schemas.xmlsoap.org/ws/2002/07/utility">http://schemas.xmlsoap.org/ws/2002/07/utility</a>
wsp	<a href="http://schemas.xmlsoap.org/ws/2002/12/policy">http://schemas.xmlsoap.org/ws/2002/12/policy</a>

The normative schema for WS-Reliable Messaging can be found at:

```
http://schemas.xmlsoap.org/ws/2004/03/rm/wsrm.xsd
```

All sections explicitly noted as examples are informational and are not to be considered normative.

If an action URI is used then the action URI MUST consist of the reliable messaging namespace URI concatenated with the "/" character and the element name. For example:

```
http://schemas.xmlsoap.org/ws/2004/03/rm/SequenceAcknowledgement
```

## 2. Reliable Messaging Model

Many errors may interrupt a conversation. Messages may be lost, duplicated or reordered. Further the host systems may experience failures and lose volatile state.

WS-ReliableMessaging provides an interoperable protocol that a Reliable Messaging (RM) Source and Reliable Messaging (RM) Destination use to provide application source and destinations a guarantee that a message that is sent will be delivered. The guarantee is specified as a delivery assurance. The protocol supports the endpoints in providing these delivery assurances. It is the responsibility of the RM Source and RM Destination to fulfill the delivery assurances, or raise an error. The protocol defined here allows endpoints to meet this guarantee for the delivery assurances defined below.

Persistence considerations related to an endpoint's ability to satisfy the delivery assurances defined below are the responsibility of the implementation and do not affect the wire protocol. As such, they are out of scope of this specification.

There are four basic delivery assurances that endpoints can provide:

**AtMostOnce** Messages will be delivered at most once without duplication or an error will be raised on at least one endpoint. It is possible that some messages in a sequence may not be delivered.

**AtLeastOnce** Every message sent will be delivered or an error will be raised on at least one endpoint. Some messages may be delivered more than once.

**ExactlyOnce** Every message sent will be delivered without duplication or an error will be raised on at least one endpoint. This delivery assurance is the logical "and" of the two prior delivery assurances.

**InOrder** Messages will be delivered in the order that they were sent. This delivery assurance may be combined with any of the above delivery assurances. It requires that the sequence observed by the ultimate receiver be non-decreasing. It says nothing about duplications or omissions.

The diagram below illustrates the entities and events in a simple reliable message exchange. First, the Application Source Sends a message for reliable delivery. The Reliable Messaging (RM) Source accepts the message and Transmits it one or more times. After receiving the message the RM Destination Acknowledges it. Finally, the RM Destination delivers the message to the Application Destination. The exact roles the entities play and the complete meaning of the events will be defined throughout this specification.

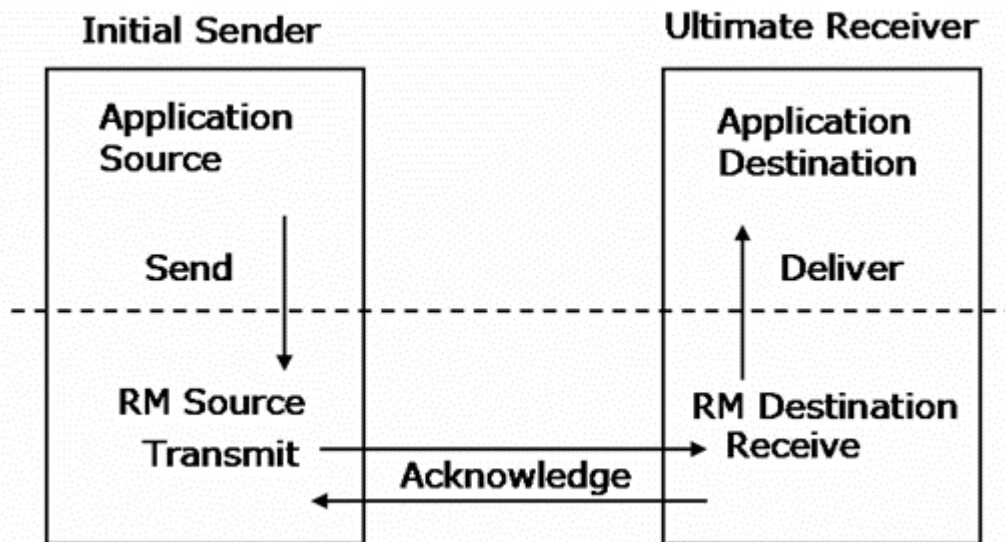


Figure 1: Reliable Messaging Model

## 2.1 Glossary

The following definitions are used throughout this specification:

**Endpoint:** A referencable entity, processor, or resource where Web service messages are originated or targeted.

**Application Source:** The endpoint that Sends a message.

**Application Destination:** The endpoint to which a message is Delivered.

**Delivery Assurance:** The guarantee that the messaging infrastructure provides on the delivery of a message.

**RM Source:** The endpoint that transmits the message.

**RM Destination:** The endpoint that receives the message.

**Send:** The act of submitting a message to the RM Source for reliable delivery. The reliability guarantee begins at this point.

**Deliver:** The act of transferring a message from the RM Destination to the Application Destination. The reliability guarantee is fulfilled at this point.

**Transmit:** The act of writing a message to a network connection.

**Receive:** The act of reading a message from a network connection.

**Acknowledgement:** The communication from the RM Destination to the RM Source indicating the successful receipt of a message.

## 2.2 Protocol Preconditions

The correct operation of the protocol requires that a number of preconditions **MUST** be established prior to the processing of the initial sequenced message:

- The RM Source **MUST** have an endpoint reference that uniquely identifies the RM Destination endpoint; correlations across messages addressed to the unique endpoint **MUST** be meaningful.
- The RM Source **MUST** have knowledge of the destination's policies, if any, and the RM Source **MUST** be capable of formulating messages that adhere to this policy.
- If a secure exchange of messages is required, then the RM Source and RM Destination **MUST** have a security context.

## 2.3 Protocol Invariants

During the lifetime of the protocol, two invariants are **REQUIRED** for correctness:

- The RM Source **MUST** assign each reliable message a sequence number (defined below) beginning at 1 and increasing by exactly 1 for each subsequent reliable message.
- Every acknowledgement issued by the RM Destination **MUST** include within an acknowledgement range or ranges the sequence number of every message successfully received by the RM Destination and **MUST** exclude sequence numbers of any messages not yet received.

## 2.4 Example Message Exchange

The following figure illustrates a possible message exchange between two reliable messaging endpoints.

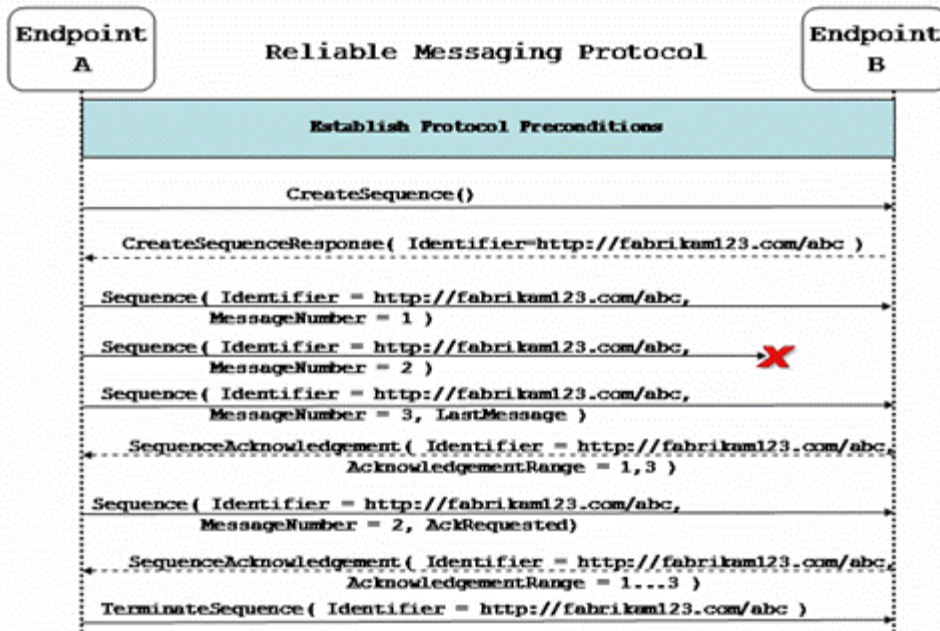


Figure 2: The WS-ReliableMessaging Protocol

1. The protocol preconditions are established. These include policy exchange, endpoint resolution, establishing trust.
2. The RM Source requests creation of a new Sequence.
3. The RM Destination creates a Sequence by returning a globally unique identifier.
4. The RM Source begins sending messages beginning with MessageNumber 1. In the figure the RM Source sends 3 messages.
5. Since the 3rd message is the last in this exchange, the RM Source includes a LastMessage token.
6. The 2nd message is lost in transit.
7. The RM Destination acknowledges receipt of message numbers 1 and 3 in response to the RM Source's <LastMessage> token.
8. The RM Source retransmits the 2nd message. This is a new message on the underlying transport, but since it has the same sequence identifier and message number so the RM Destination can recognize it as equivalent to the earlier message, in case both are received.
9. The RM Source includes an <AckRequested> element so the RM Destination will expedite an acknowledgement.
10. The RM Destination receives the second transmission of the message with MessageNumber 2 and acknowledges receipt of message numbers 1, 2, and 3 which carried the <LastMessage> token.

11. The RM Source receives this acknowledgement and sends a `TerminateSequence` message to the RM Destination indicating that the sequence is completed and reclaims any resources associated with the Sequence.
12. The RM Destination receives the `TerminateSequence` message indicating that the RM Source will not be sending any more messages, and reclaims any resources associated with the Sequence.

Note: steps 2, 3, 11 and 12 are optional. If the RM Source can obtain a Sequence Identifier from the RM Destination by some other out-of-band means, it is free to do so. Also, the RM Destination may not require efficient resource reclamation, and may allow the RM Source to establish a new Sequence.

Now that the basic model has been outlined, the details of the elements used in this protocol are now provided.

## 3. RM Protocol Elements

### 3.1 Sequences

The RM protocol uses a `<Sequence>` element to track and manage the reliable delivery of messages. Messages for which the delivery assurance applies MUST contain a `<Sequence>` element. Each Sequence MUST have a unique `<Identifier>` element and each message within a Sequence MUST have a `<MessageNumber>` element that increments by 1 from an initial value of 1. These values are contained within a `<Sequence>` element accompanying each message being delivered in the context of a Sequence. In addition to mandatory `<Identifier>` and `<MessageNumber>` elements, the header MAY include a `<LastMessage>` element, a `<wsu:Expires>` element, or both.

There MUST be no more than one `<Sequence>` element in any message.

The purpose of the `<LastMessage>` element is to signal to the RM Destination that the message represents the last message in the Sequence.

A following exemplar defines its syntax:

```
<wsrm:Sequence ...>
  <wsu:Identifier> [URI] </wsu:Identifier>
  <wsrm:MessageNumber> [unsignedLong] </wsrm:MessageNumber>
  <wsrm:LastMessage/>?
  <wsu:Expires> [dateTime] </wsu:Expires>?
  ...
</wsrm:Sequence>
```

The following example illustrates a Sequence element.

```
<wsrm:Sequence>
  <wsu:Identifier>http://fabrikam123.com/abc</wsu:Identifier>
  <wsrm:MessageNumber>10</wsrm:MessageNumber>
  <wsrm:LastMessage/>
</wsrm:Sequence>
```

The following describes the content model of the Sequence header.

`/wsm:Sequence`

This is the element containing Sequence information for WS-ReliableMessaging. The `<wsm:Sequence>` element MUST be understood by the RM Destination. The `<wsm:Sequence>` element MUST have a `mustUnderstand` attribute from the namespace corresponding to the version of SOAP to which the `<wsm:Sequence>` SOAP header block is bound.

`/wsm:Sequence/wsui:Identifier`

This required element MUST contain a URI conformant with [RFC2396] that uniquely identifies the Sequence. The normative definition of this element may be found in [[WSCoordination](#)].

`/wsm:Sequence/wsm:MessageNumber`

This required element MUST contain an unsignedLong representing the ordinal position of the message within a Sequence. Sequence MessageNumbers start at 1 and monotonically increase throughout the Sequence. If the message number reaches the maximum value of an unsignedLong (18,446,744,073,709,551,615), no new sequence numbers can be generated and the RM Source MUST issue a `MessageNumberRollover` fault.

`/wsm:Sequence/wsm:LastMessage`

This element MAY be included by the RM Source endpoint. The `<LastMessage>` element has no content. A RM Source endpoint MUST include a `<LastMessage>` element in the `<Sequence>` element for the last message in a Sequence. An RM Destination endpoint MUST respond with a `<SequenceAcknowledgement>` upon receipt of a `<LastMessage>` element. A Sequence MUST NOT use a `<MessageNumber>` value greater than that which accompanies a `<LastMessage>` element. An RM Destination MUST generate a `LastMessageNumberExceeded` fault upon receipt of such a message.

`/wsm:Sequence/wsui:Expires`

This optional element indicates the point in time at which the Sequence will expire. Its value is a `dateTime`. Its presence MUST override any previously established expiration. Expiration should be established as described in Section 4.3. A `SequenceAcknowledgement` that covers the `MessageNumber` of the message that carries a `<wsui:Expires>` element indicates acceptance of the new value.

`/wsm:Sequence/{any}`

This is an extensibility mechanism to allow different types of information, based on a schema, to be passed.

`/wsm:Sequence/@{any}`

This is an extensibility mechanism to allow additional attributes, based on schemas, to be added to the element.

## 3.2 Sequence Acknowledgement

The RM Destination informs the RM Source of successful message receipt using an acknowledgement. Acknowledgements may be transmitted individually or included on return messages. The RM Destination MAY send an acknowledgement at any point. The timing of acknowledgements can be advertised using policy and Acknowledgements can be explicitly requested using the `<AckRequested>` directive.

The following exemplar defines its syntax:

```
<wsrm:SequenceAcknowledgement ...>
  <wsu:Identifier> [URI] </wsu:Identifier>
  [ <wsrm:AcknowledgementRange ...
    Upper="[unsignedLong]"
    Lower="[unsignedLong]"/> +
  | <wsrm:Nack>[unsignedLong]</wsrm:Nack> + ]
  ...
</wsrm:SequenceAcknowledgement>
```

The following describes the content model of the `<SequenceAcknowledgement>` element.

`/wsrm:SequenceAcknowledgement`

This element contains the Sequence acknowledgement information.

`/wsrm:SequenceAcknowledgement/wsui:Identifier`

This required element MUST contain a URI conformant with [RFC2396] that uniquely identifies the Sequence. The normative definition of this element may be found in [\[WSCoordination\]](#).

`/wsrm:SequenceAcknowledgement/wsrm:AcknowledgementRange`

This optional element, if present, can occur 1 or more times. It contains a range of message Sequence MessageNumbers successfully received by the receiving endpoint manager. The ranges SHOULD NOT overlap. This element MUST NOT be present if `<Nack>` is also present as a child of `<SequenceAcknowledgement>`.

`/wsrm:SequenceAcknowledgement/wsrm:AcknowledgementRange/@Upper`

This required attribute contains an unsignedLong representing the `<MessageNumber>` of the highest contiguous message in a Sequence range.

`/wsrm:SequenceAcknowledgement/wsrm:AcknowledgementRange/@Lower`

This required attribute contains an unsignedLong representing the `<MessageNumber>` of the lowest contiguous message in a Sequence range.

`/wsrm:SequenceAcknowledgement/wsrm:Nack`

This optional element, if present, MUST contain an unsignedLong representing the `<MessageNumber>` of an unreceived message in a Sequence. This element MUST NOT be present if the `<AcknowledgementRange>` is also present as a child of `<SequenceAcknowledgement>`. The `<Nack>` element permits the gap analysis of the `<AcknowledgementRange>` elements to be performed at the RM Destination rather than at the RM Source which may yield performance benefits in certain environments.

`/wsrm:SequenceAcknowledgement/{any}`

This is an extensibility mechanism to allow different (extensible) types of information, based on a schema, to be passed.

`/wsrm:SequenceAcknowledgement/@{any}`

This is an extensibility mechanism to allow additional attributes, based on schemas, to be added to the element.

The following examples illustrate `<SequenceAcknowledgement>` elements:

- Message numbers 1..10 inclusive in a Sequence have been received by the RM Destination.

```
<wsrm:SequenceAcknowledgement>
  <wsu:Identifier>http://fabrikam123.com/abc</wsu:Identifier>
  <wsrm:AcknowledgementRange Upper="10" Lower="1"/>
</wsrm:SequenceAcknowledgement>
```

- Message numbers 1..2, 4..6, and 8..10 inclusive in a Sequence have been received by the RM Destination, messages 3 and 7 have not been received.

```
<wsrm:SequenceAcknowledgement>
  <wsu:Identifier>http://fabrikam123.com/abc</wsu:Identifier>
  <wsrm:AcknowledgementRange Upper="2" Lower="1"/>
  <wsrm:AcknowledgementRange Upper="6" Lower="4"/>
  <wsrm:AcknowledgementRange Upper="10" Lower="8"/>
</wsrm:SequenceAcknowledgement>
```

- Message number 3 in a Sequence has not been received by the RM Destination.

```
<wsrm:SequenceAcknowledgement>
  <wsu:Identifier>http://fabrikam123.com/abc</wsu:Identifier>
  <wsrm:Nack>3</wsrm:Nack>
</wsrm:SequenceAcknowledgement>
```

### 3.3 Request Acknowledgement

The purpose of the `<AckRequested>` element is to signal to the RM Destination that the RM Source is requesting that a `<SequenceAcknowledgement>` be returned.

At any time, the RM Source may request an acknowledgement message from the RM Destination point using an `<AckRequested>` element.

The RM Source endpoint requests this acknowledgement by including an `<AckRequested>` element in the message. An RM Destination that receives a message that contains an `<AckRequested>` element **MUST** respond with a message containing a `<SequenceAcknowledgement>` element.

The following exemplar defines its syntax:

```
<wsrm:AckRequested ...>
  <wsu:Identifier> [URI] </wsu:Identifier>
  <wsrm:MessageNumber> [unsignedLong] </wsrm:MessageNumber> ?
  ...
</wsrm:AckRequested>
```

`/wsrm:AckRequested`

This element requests an acknowledgement for the identified sequence.

`/wsrm:AckRequested/wsui:Identifier`

This required element contains the URI of the sequence to which the request applies. The normative definition of this element may be found in [[WSCoordination](#)].

`/wsm:AckRequested/wsm:MessageNumber`

This optional element, if present, MUST contain an unsignedLong representing the highest `<MessageNumber>` sent by the RM Source within a Sequence. If present, it MAY be treated as a hint to the RM Destination as an optimization to the process of preparing to transmit a `<SequenceAcknowledgement>`.

`/wsm:AckRequested /{any}`

This is an extensibility mechanism to allow different (extensible) types of information, based on a schema, to be passed.

`/wsm:AckRequested /@{any}`

This is an extensibility mechanism to allow additional attributes, based on schemas, to be added to the element.

### 3.4 Sequence Creation

Certain circumstances require that an RM Destination be capable of efficiently reclaiming resources related to a Sequence. In such circumstances, an RM Destination MAY require that before an RM Source can begin sending messages in a Sequence, the RM Source MUST request that the RM Destination establish a new Sequence. In such situations, the RM Source requests creation of a Sequence by sending a `<CreateSequence>` message to the RM Destination which in turn responds either with a `<CreateSequenceResponse>` or a `CreateSequenceRefused` fault.

The following exemplar defines the `<CreateSequence>` syntax:

```
<wsm:CreateSequence ...>
  ...
</wsm:CreateSequence>
```

`/wsm:CreateSequence`

This element requests creation of a new Sequence between the RM Source that sends it, and the RM Destination to which it is sent. The RM Destination MUST respond either with a `<CreateSequenceResponse>` or a `SequenceRefused` fault.

`/wsm:CreateSequence /{any}`

This is an extensibility mechanism to allow different (extensible) types of information, based on a schema, to be passed.

`/wsm:CreateSequence /@{any}`

This is an extensibility mechanism to allow additional attributes, based on schemas, to be added to the element.

A `<CreateSequenceResponse>` is sent by an RM Destination in response to receipt of a `<CreateSequence>`. It carries the `<Identifier>` of the created Sequence and indicates that the RM Source may begin sending messages in the context of the identified Sequence.

The following exemplar defines the `<CreateSequenceResponse>` syntax:

```
<wsm:CreateSequenceResponse ...>
  <wsu:Identifier> [URI] </wsu:Identifier>
```

```
...
</wsrm:CreateSequenceResponse>
```

#### /wsrm:CreateSequenceResponse

This element is sent in response to a `<CreateSequence>`. It indicates that the RM Destination has created a new Sequence at the request of the RM Source.

#### /wsrm:CreateSequenceResponse/wsui:Identifier

This required element contains the URI of the sequence that has been created by the RM Destination. The normative definition of this element may be found in [\[WSCoordination\]](#).

#### /wsrm:CreateSequenceResponse /{any}

This is an extensibility mechanism to allow different (extensible) types of information, based on a schema, to be passed.

#### /wsrm:CreateSequenceResponse /@{any}

This is an extensibility mechanism to allow additional attributes, based on schemas, to be added to the element.

### 3.5 Sequence Termination

After an RM Source receives the `<SequenceAcknowledgement>` acknowledging the complete range of messages in a Sequence, it sends a `<TerminateSequence>` to the RM Destination to indicate that the Sequence is complete, and that it will not be sending any further messages related to the Sequence. The RM Destination can safely reclaim any resources associated with the Sequence upon receipt of the `<TerminateSequence>` message.

The following exemplar defines the `TerminateSequence` syntax:

```
<wsrm:TerminateSequence ...>
  <wsui:Identifier> [URI] </wsui:Identifier>
  ...
</wsrm:TerminateSequence>
```

#### /wsrm:TerminateSequence

This element is sent by an RM Source after it has received the final `<SequenceAcknowledgement>` covering the full range of a Sequence. It indicates that the RM Destination can safely reclaim any resources related to the identified Sequence.

#### /wsrm:TerminateSequence/wsui:Identifier

This required element contains the URI of the sequence that is being terminated. The normative definition of this element may be found in [\[WSCoordination\]](#).

#### /wsrm:TerminateSequence /{any}

This is an extensibility mechanism to allow different (extensible) types of information, based on a schema, to be passed.

#### /wsrm:TerminateSequence /@{any}

This is an extensibility mechanism to allow additional attributes, based on schemas, to be added to the element.

## 4. Policy Assertions

WS-Policy [[WS-Policy](#)], WS-PolicyAttachment [[WS-PolicyAttachment](#)] and WS-PolicyAssertions [[PolicyAssertions](#)] collectively define a framework, model and grammar for expressing the capabilities, requirements, and general characteristics of entities in an XML Web services-based system. This specification leverages the WS-Policy family of specifications to enable an RM Destination endpoint to describe and advertise its capabilities and/or requirements, and to enable an RM Source endpoint to communicate to the RM Destination the selected characteristics that apply for a given Sequence. The set of policy assertions for reliable delivery is defined below.

### 4.1 Spec Version

The protocol determines invariants maintained by the reliable messaging endpoints and the directives used to track and manage the delivery of messages. The assertion that will be used to identify the protocol (and version) either used or supported (depending on context) is the `wsp:SpecVersion` assertion that is defined in the WS-PolicyAssertions specification [[PolicyAssertions](#)].

An example use of this assertion to indicate an endpoint's support for the WS-ReliableMessaging protocol follows:

```
<wsp:SpecVersion
wsp:URI="http://schemas.xmlsoap.org/ws/2004/03/rm"
wsp:Usage="wsp:Required"/>
```

### 4.2 Sequence Creation

An RM Destination may optionally declare that it be responsible for creating new Sequences by declaring the `<wsrm:SequenceCreation>` policy assertion.

The following exemplar defines this element:

```
<wsrm:SequenceCreation ...> ... </wsrm:SequenceCreation>
```

The following describes the attributes and tags listed in the syntax above:

`/wsrm:SequenceCreation`

This element may be declared by an RM Destination. It indicates that the Sequence creation protocol described in section 3.5 MUST be used by an RM Source to initiate a new Sequence.

`/wsrm:SequenceCreation/{any}`

This is an extensibility mechanism to allow different (extensible) types of information, based on a schema, to be passed.

`/wsrm:SequenceCreation/@{any}`

This is an extensibility mechanism to allow additional attributes, based on schemas, to be added to the element.

### 4.3 Sequence Expiration

The lifetime of a sequence may be established using the `<wsu:Expires>` policy assertion defined in Web Services Security Addendum [[SecurityAddendum](#)].

The following pseudo schema defines this element:

```
<wsu:Expires ...> [dateTime] <wsu:Expires>
```

The following describes the attributes and tags listed in the syntax above:

/wsu:Expires

This element is defined in WS-Security Addendum. It indicates the expiration time of the sequence.

The example below indicates should expire January 1, 2100.

```
<wsu:Expires>2100-01-01T12:00:00.000-00:00</wsu:Expires>
```

While the expression of time for Sequence expiration is absolute, the correct operation of the WS-Reliable Messaging protocol does not depend upon the synchronization of clocks between participating endpoints.

## 4.4 InactivityTimeout

This assertion specifies (in milliseconds) a period of inactivity for a Sequence. If during this duration an endpoint has received no application or control messages, the endpoint MAY consider the Sequence to have been terminated due to inactivity.

The following exemplar defines its syntax:

```
<wsrm:InactivityTimeout Milliseconds="[unsignedLong]" ...> ...  
</wsrm:InactivityTimeout>
```

The following describes the attributes and tags listed in the syntax above:

/wsrm:InactivityTimeout

This element is a policy assertion as defined in WS-PolicyAssertions. It specifies a period of inactivity after which the endpoints MAY consider the Sequence to have been terminated due to inactivity.

/wsrm:InactivityTimeout/@Milliseconds

This attribute carries the value of the inactivity timeout duration, specified in milliseconds, expressed as an unsignedLong.

/wsrm:InactivityTimeout/{any}

This is an extensibility mechanism to allow different (extensible) types of information, based on a schema, to be passed.

/wsrm:InactivityTimeout/@{any}

This is an extensibility mechanism to allow additional attributes, based on schemas, to be added to the element.

## 4.5 Retransmission Interval

An RM Source may optionally specify a base retransmission interval for a sequence. If no acknowledgement has been received for a given message within the interval, the RM Source will retransmit the message. The retransmission interval may be modified at the source's discretion during the lifetime of the sequence. This assertion does not alter the formulation of messages as transmitted, only the timing of their transmission.

The sequence may optionally specify that the interval will be adjusted using the commonly known exponential backoff algorithm.

The following exemplar defines its syntax:

```
<wsrm:BaseRetransmissionInterval Milliseconds="[unsignedLong]" ...> ...  
</wsrm:BaseRetransmissionInterval>  
  
<wsrm:ExponentialBackoff ...> ... </wsrm:ExponentialBackoff>
```

The following describes the attributes and tags listed in the syntax above:

**/wsrm:BaseRetransmissionInterval**

This element is a policy assertion as defined in WS-PolicyAssertions. This assertion specifies the interval in milliseconds the RM Source will wait after transmitting a message and before retransmitting the message.

**/wsrm:BaseRetransmissionInterval/@Milliseconds**

This attribute specifies the interval in milliseconds the RM Source will wait after transmitting a message and before retransmitting the message.

**/wsrm:BaseRetransmissionInterval/{any}**

This is an extensibility mechanism to allow different (extensible) types of information, based on a schema, to be passed.

**/wsrm:BaseRetransmissionInterval/@{any}**

This is an extensibility mechanism to allow additional attributes, based on schemas, to be added to the element.

**/wsrm:ExponentialBackoff**

This element is a policy assertion as defined in WS-PolicyAssertions. This assertion specifies that the retransmission interval will be adjusted using the exponential backoff algorithm [Tanenbaum].

**/wsrm:ExponentialBackoff/{any}**

This is an extensibility mechanism to allow different (extensible) types of information, based on a schema, to be passed.

**/wsrm:ExponentialBackoff/{@any}**

This is an extensibility mechanism to allow additional attributes, based on schemas, to be added to the element.

The example below indicates that unacknowledged messages will be retransmitted after two seconds and that exponential backoff algorithm will be used for timing of successive retransmissions should the message continue to go unacknowledged.

```
<wsp:Policy>  
  <wsrm:BaseRetransmissionInterval wsp:Usage="wsp:Observed"  
    Milliseconds="2000"/>  
  <wsrm:ExponentialBackoff wsp:Usage="wsp:Observed"/>  
</wsp:Policy>
```

## 4.6 Acknowledgement Interval

Acknowledgements can be sent on return messages or sent stand-alone. In the case that a return message is not available to send an acknowledgement an RM Destination

may wait for up to the acknowledgement interval before sending a stand-alone acknowledgement. If there are no unacknowledged messages, the RM Destination may choose not to send an acknowledgement.

This assertion does not alter the formulation of messages or acknowledgements as transmitted. Its purpose is to communicate the timing of acknowledgements so that the RM Source may tune appropriately. It does not alter the meaning of the `<AckRequested>` directive.

The following exemplar defines its syntax:

```
<wsrm:AcknowledgementInterval Milliseconds="[unsignedLong]" ...> ...  
</wsrm:AcknowledgementInterval>
```

The following describes the attributes and tags listed in the syntax above:

`/wsrm:AcknowledgementInterval`

This assertion specifies the duration in milliseconds after which the RM Destination will transmit an acknowledgement.

`/wsrm:AcknowledgementInterval/@Milliseconds`

This required attribute holds the value of the assertion.

`/wsrm:AcknowledgementInterval/{any}`

This is an extensibility mechanism to allow different (extensible) types of information, based on a schema, to be passed.

`/wsrm:AcknowledgementInterval/{@any}`

This is an extensibility mechanism to allow additional attributes, based on schemas, to be added to the element.

The example below indicates the RM Destination MAY buffer acknowledgements for up to two-tenths of a second.

```
<wsp:Policy>  
  <wsrm:AcknowledgementInterval wsp:Usage="wsp:Observed"  
    Milliseconds="200" />  
</wsp:Policy>
```

## 5. Attaching Policy Assertions to Sequences

The policy assertions defined in Section 4. Policy Assertions above can be attached to an individual Sequence or to Sequences in general. The policy assertions related to a Sequence are established using an agreement as discussed in Section 5.2.

The WS-PolicyAttachment specification provides a means of attaching policy expressions to domain expressions. This specification recommends the use of the `<PolicyAttachment>` element to attach policy to a Sequence and defines the extension below as a means of attaching policy to a Sequence.

## 5.1 SequenceRef

The `<SequenceRef>` expression is provided to enable policy assertions to be declared for individual Sequences, or Sequences whose URI match a specified prefix. These assertions apply to the Sequence itself, not to messages in the Sequence.

The following exemplar defines its syntax:

```
<wsrm:SequenceRef Match="wsrm:Exact|wsrm:Prefix" ?>
  [URI]
</wsrm:SequenceRef>
```

The following describes the attributes and tags listed in the syntax above:

`/wsrm:SequenceRef`

This element is a policy attachments domain expression that identifies a Sequence or Sequences. Its content is a URI.

`/wsrm:SequenceRef/@Match`

This attribute specifies whether the URI in the body **MUST** match exactly or **MUST** only match a prefix of the URI for a Sequence.

Policy assertions can be attached to an individual Sequence by embedding a `<SequenceRef>` element that identifies that Sequence within a `<PolicyAttachment>` element.

The following example attaches the policy "profile" defined in Appendix B with the Sequence with the Identifier of "http://fabrikam123.com/abc". Additionally, it requires that the Sequence use this version of the WS-ReliableMessaging specification in a manner that provides the delivery assurances associated with "AtMostOnce":

```
<wsp:PolicyAttachment>
  <wsp:AppliesTo>
    <wsrm:SequenceRef>
      <wsu:Identifier>http://fabrikam123.com/abc</wsu:Identifier>
    </wsrm:SequenceRef>
  </wsp:AppliesTo>
  <wsp:Policy>
    <wsp:SpecVersion
      wsp:URI="http://schemas.xmlsoap.org/ws/2004/03/rm"
      wsp:Usage="wsp:Required"/>
  </wsp:Policy>
  <wsp:PolicyReference
    Ref="http://schemas.xmlsoap.org/ws/2004/03/rm/baseTimingProfile.xml"/>
</wsp:PolicyAttachment>
```

## 5.2 Metadata Exchange

There are many ways that Web service partners can exchange WSDL interface and WS-Policy information. Some will be informal, out-of-band approaches using e-mail, posting documents on a Web site or in UDDI, etc.

To facilitate interoperability there is a need for a metadata exchange model. We anticipate that future specifications will define a WSDL interface and message model that Web service clients MAY use to obtain WSDL and WS-Policy information for a service at a URL or endpoint reference.

## 6. Faults

The faults defined in this section are generated if the condition stated in the preamble is met. Endpoints compliant with this specification MUST include required message information headers on all fault messages.

The definitions of faults use the following properties:

[Code] The fault code.

[Subcode] The fault subcode.

[Reason] The English language reason element.

[Detail] The detail element. If absent, no detail element is defined for the fault.

The [Code] property must be either "Sender" or "Receiver". These properties are serialized into text XML as follows:

SOAP Version	Sender	Receiver
SOAP 1.1	S11:Client	S11:Server
SOAP 1.2	S:Sender	S:Receiver

These the properties above bind to a SOAP 1.2 fault as follows:

```
<S:Envelope>
  <S:Header>
    <!-- Headers elided for clarity. -->
  </S:Header>
  <S:Body>
    <S:Fault>
      <S:Code>
        <S:Value> [Code] </S:Value>
      <S:Subcode>
        <S:Value> [Subcode] </S:Value>
      </S:Subcode>
    </S:Fault>
  </S:Body>
</S:Envelope>
```

```

</S:Code>
<S:Reason>
  <S:Text xml:lang="en">[Reason]</S:Text>
</S:Reason>
<S:Detail>
  [Detail]
  ...
</S:Detail>
</S:Fault>
</S:Body>
</S:Envelope>

```

These the properties above bind to a SOAP 1.1 fault as follows:

```

<S11:Envelope>
  <S11:Header>
    <wsrm:SequenceFault>
      <wsrm:FaultCode> [Subcode] </wsrm:FaultCode>
      [Detail]
      ...
    </wsrm:SequenceFault>
    <!-- Headers elided for clarity. -->
  </S11:Header>
  <S11:Body>
    <S11:Fault>
      <faultcode>[Code]</faultcode>
      <faultstring xml:lang="en">[Reason]</faultstring>
    </S11:Fault>
  </S11:Body>
</S11:Envelope>

```

## 6.1 SequenceFault Element

The purpose of the `<SequenceFault>` element is to carry the specific details of a fault generated during the reliable messaging specific processing of a message belonging to a Sequence. The `<SequenceFault>` container MUST only be used in conjunction with the SOAP1.1 fault mechanism. It MUST not be used in conjunction with the SOAP1.2 binding.

The following exemplar defines its syntax:

```
<wsrm:SequenceFault ...>
  <wsrm:FaultCode> [Subcode] </wsrm:FaultCode>
  ...
</wsrm:SequenceFault>
```

The following describes the content model of the `SequenceFault` element.

`/wsrm:SequenceFault`

This is the element containing Sequence information for WS-ReliableMessaging

`/wsrm:SequenceFault/wsrm:FaultCode`

This element, if present, MUST contain a qualified name from the set of fault codes defined below.

`/wsrm:SequenceFault/{any}`

This is an extensibility mechanism to allow different (extensible) types of information, based on a schema, to be passed.

`/wsrm:SequenceFault/@{any}`

This is an extensibility mechanism to allow additional attributes, based on schemas, to be added to the element.

## 6.2 Sequence Terminated

This fault is sent by either the RM Source or the RM Destination to indicate that the endpoint that generates the fault has either encountered an unrecoverable condition, or has detected a violation of the protocol and as a consequence, has chosen to terminate the sequence. The endpoint that generates this fault should make every reasonable effort to notify the corresponding endpoint of this decision.

Properties:

[Code] Sender

[Subcode] `wsrm:SequenceTerminated`

[Reason] The Sequence has been terminated due to an unrecoverable error.

[Detail]

```
<wsu:Identifier> [URI] </wsu:Identifier>
```

## 6.3 Unknown Sequence

This fault is sent by either the RM Source or the RM Destination in response to a message containing an unknown sequence identifier.

Properties:

[Code] Sender

[Subcode] `wsrm:UnknownSequence`

[Reason] The value of `wsu:Identifier` is not a known Sequence identifier.

[Detail]

```
<wsu:Identifier> [URI] </wsu:Identifier>
```

## 6.4 Invalid Acknowledgement

This fault is sent by the RM Source in response to a `<SequenceAcknowledgement>` that violates the cumulative acknowledgement invariant. An example of such a violation would be a `SequenceAcknowledgement` covering messages that have not been sent.

[Code] Sender

[Subcode] `wsrc:InvalidAcknowledgement`

[Reason] The `SequenceAcknowledgement` violates the cumulative acknowledgement invariant.

[Detail]

```
<wsrc:SequenceAcknowledgement> ... </wsrc:SequenceAcknowledgement>
```

## 6.5 Message Number Rollover

This fault is sent by the RM Source to indicate that it has run out of message numbers for a sequence. It is an unrecoverable error and terminates the Sequence.

Properties:

[Code] Sender

[Subcode] `wsrc:MessageNumberRollover`

[Reason] The maximum value for `wsrc:MessageNumber` has been exceeded.

[Detail]

```
<wsu:Identifier> [URI] </wsu:Identifier>
```

## 6.6 Last Message Number Exceeded

This fault is sent by an RM Destination to indicate that it has received a message that has a `<MessageNumber>` within a Sequence that exceeds the value of the `<MessageNumber>` element that accompanied a `<LastMessage>` element for the Sequence. This is an unrecoverable error and terminates the Sequence.

Properties:

[Code] Sender

[Subcode] `wsrc:LastMessageNumberExceeded`

[Reason] The value for `wsrc:MessageNumber` exceeds the value of the `MessageNumber` accompanying a `LastMessage` element in this Sequence.

[Detail]

```
<wsu:Identifier> [URI] </wsu:Identifier>
```

## 6.7 Sequence Refused

This fault is sent by an RM Destination to indicate that it cannot begin a requested Sequence.

Properties:

[Code] Sender

[Subcode] wsrn:SequenceRefused

[Reason] The requested Sequence has been refused by the RM Destination.

[Detail]

```
<wsu:Identifier> [URI] </wsu:Identifier>
```

## 6.8 Create Sequence Refused

This fault is sent in response to a create sequence request that cannot be satisfied.

Properties:

[Code] Sender

[Subcode] wsrn:CreateSequenceRefused

[Reason] The create sequence request has been refused by the RM Destination.

[Detail] empty

## 7. Security Considerations

It is strongly recommended that the communication between services be secured using the mechanisms described in WS-Security. In order to properly secure messages, the body and all relevant headers need to be included in the signature. Specifically, the `<wsrm:Sequence>` header needs to be signed with the body in order to "bind" the two together. The `<wsrm:SequenceAcknowledgement>` header may be signed independently because a reply independent of the message is not a security concern.

Because Sequences are expected to exchange a number of messages, it is recommended that a security context be established using the mechanisms described in WS-Trust and WS-SecureConversation. If a Sequence is bound to a specific endpoint, then the security context needs to be established or shared with the endpoint servicing the Sequence. While the context can be established at any time, it is critical that the messages establishing the Sequence be secured even if they precede security context establishment. However, it is recommended that the security context be established first. Security contexts are independent of reliable messaging Sequences.

Consequently, security contexts can come and go independent of the lifetime of the Sequence. In fact, it is recommended that the lifetime of a security context be less than the lifetime of the Sequence unless the Sequence is very short-lived.

It is common for message Sequences to exchange a number of messages (or a large amount of data). As a result, the usage profile of a Sequence is such that it is susceptible to key attacks. For this reason it is strongly recommended that the keys be

changed frequently. This "re-keying" can be effected a number of ways. The following list outlines four common techniques:

- Closing and re-establishing a security context
- Exchanging new secrets between the parties
- Using a derived key sequence and switch "generations"
- Attaching a nonce to each message and using it in a derived key function with the shared secret

The security context may be re-established using the mechanisms described in WS-Trust and WS-SecureConversation. Similarly, secrets can be exchanged using the mechanisms described in WS-Trust. Note, however, that the current shared secret should not be used to encrypt the new shared secret. Derived keys, the preferred solution from this list, can be specified using the mechanisms described in WS-SecureConversation.

There is a core tension between security and reliable messaging that can be problematic if not considered in implementations. That is, one aspect of security is to prevent message replay and the core tenant of reliable messaging is to replay messages until they are acknowledged. Consequently, if the security sub-system processes a message but a failure occurs before the reliable messaging sub-system records the message (or the message is considered "processed"), then it is possible (and likely) that the security sub-system will treat subsequent copies as replays and discard them. At the same time, the reliable messaging sub-system will likely continue to expect and even solicit the missing message(s). Care should be taken to avoid and prevent this race condition.

The following list summarizes common classes of attacks that apply to this protocol and identifies the mechanism to prevent/mitigate the attacks:

- **Message alteration** – Alteration is prevented by including signatures of the message information using WS-Security.
- **Message disclosure** – Confidentiality is preserved by encrypting sensitive data using WS-Security.
- **Key integrity** – Key integrity is maintained by using the strongest algorithms possible (by comparing secured policies – see WS-Policy and WS-SecurityPolicy).
- **Authentication** – Authentication is established using the mechanisms described in WS-Security and WS-Trust. Each message is authenticated using the mechanisms described in WS-Security.
- **Accountability** – Accountability is a function of the type of and string of the key and algorithms being used. In many cases, a strong symmetric key provides sufficient accountability. However, in some environments, strong PKI signatures are required.
- **Availability** – All reliable messaging services are subject to a variety of availability attacks. Replay detection is a common attack and it is recommended that this be addressed by the mechanisms described in WS-Security. (Note that because of legitimate message replays, detection should include a differentiator besides message id such as a timestamp). Other attacks, such as network-level denial of service attacks are harder to avoid and are outside the scope of this specification.

That said, care should be taken to ensure that minimal state is saved prior to any authenticating sequences.

## 8. References

### [KEYWORDS]

S. Bradner, "Key words for use in RFCs to Indicate Requirement Levels," RFC 2119, Harvard University, March 1997

### [SOAP]

W3C Note, "[SOAP: Simple Object Access Protocol 1.1](#)," 08 May 2000.

### [URI]

T. Berners-Lee, R. Fielding, L. Masinter, "Uniform Resource Identifiers (URI): Generic Syntax," RFC 2396, MIT/LCS, U.C. Irvine, Xerox Corporation, August 1998.

### [XML-ns]

W3C Recommendation, "Namespaces in XML," 14 January 1999.

### [XML-Schema1]

W3C Recommendation, "[XML Schema Part 1: Structures](#)," 2 May 2001.

### [XML-Schema2]

W3C Recommendation, "[XML Schema Part 2: Datatypes](#)," 2 May 2001.

### [WSPolicy]

"[Web Services Policy Framework](#)," Microsoft, IBM, BEA, SAP, 18 December, 2002.

### [PolicyAttachment]

"[Web Services Policy Framework](#)," Microsoft, IBM, BEA, SAP, 18 December, 2002.

### [PolicyAssertions]

"[Web Services Policy Assertions Language \(WS-PolicyAssertions\)](#)," Microsoft, IBM, BEA, SAP, 18 December 2002.

### [WSCoordination]

"[Web Services Coordination Framework](#)," Microsoft, IBM, BEA, 9 August, 2002.

### [WSSecurity]

"[Web Services Security \(WS-Security\)](#)," Microsoft, IBM, VeriSign, 5 April 2002.

### [SecurityAddendum]

"[Web Services Security Addendum](#)," Microsoft, IBM, VeriSign, 18 August 2002.

### [SecureConversation]

"[Web Services Secure Conversation Language \(WS-SecureConversation\)](#)," Microsoft, IBM, VeriSign, RSA Security, 18 December 2002.

### [SecurityPolicy]

"[Web Services Security Policy Language \(WS-SecurityPolicy\)](#)," Microsoft, IBM, VeriSign, RSA Security, 18 December 2002.

### [WSTrust]

"[Web Services Trust Language \(WS-Trust\)](#)," Microsoft, IBM, VeriSign, RSA Security, 18 December 2002.

### [Tanenbaum]

"Computer Networks," Andrew S. Tanenbaum, Prentice Hall PTR, 2003.

## [WSDL]

W3C Note, "Web [Services Description Language \(WSDL 1.1\)](#)," 15 March 2001.

## Appendix A Example Timing Profile

The efficiency of WS-ReliableMessaging implementations can be improved using widely known timing profiles. The following profile can be found at:

```
http://schemas.xmlsoap.org/ws/2004/03/rm/baseTimingProfile.xml
```

This profile defines a base retransmission interval of 3 seconds with exponential backoff. RM Destinations can buffer acknowledgements for 1 second. If one endpoint has not received messages from the other for 1 day or longer, the sequence MAY be terminated.

```
<wsp:Policy>
  <wsrm:BaseRetransmissionInterval Milliseconds="3000"
    wsp:Usage="wsp:Observed" />
  <wsrm:ExponentialBackoff wsp:Usage="wsp:Observed" />
  <wsrm:InactivityTimeout Milliseconds="86400000"
    wsp:Usage="wsp:Observed" />
  <wsrm:AcknowledgementInterval Milliseconds="1000"
    wsp:Usage="wsp:Observed" />
</wsp:Policy>
```

## Appendix B Schema

The normative schema for WS-ReliableMessaging is located at:

```
http://schemas.xmlsoap.org/ws/2004/03/rm/wsrn.xsd
```

The following copy is provided for reference.

```
<xs:schema targetNamespace="http://schemas.xmlsoap.org/ws/2004/03/rm"
  xmlns:wsu="http://schemas.xmlsoap.org/ws/2002/07/utility"
  xmlns:wsrm="http://schemas.xmlsoap.org/ws/2004/03/rm"
  xmlns:xs="http://www.w3.org/2001/XMLSchema" elementFormDefault="qualified"
  attributeFormDefault="unqualified">
  <xs:import namespace="http://schemas.xmlsoap.org/ws/2002/07/utility"
    schemaLocation="http://schemas.xmlsoap.org/ws/2002/07/utility"/>
  <!-- Protocol Elements -->
  <xs:complexType name="SequenceType">
    <xs:sequence>
      <xs:element ref="wsu:Identifier"/>
      <xs:element name="MessageNumber" type="xs:unsignedLong"/>
      <xs:element name="LastMessage" minOccurs="0"/>
      <xs:any namespace="##other" processContents="lax" minOccurs="0"
        maxOccurs="unbounded"/>
    </xs:sequence>
  </xs:complexType>
```

```

    </xs:sequence>
    <xs:anyAttribute namespace="##other" processContents="lax"/>
</xs:complexType>
<xs:element name="Sequence" type="wsrm:SequenceType"/>
<xs:element name="SequenceTerminate">
  <xs:complexType>
    <xs:sequence>
      <xs:element ref="wsu:Identifier"/>
      <xs:any namespace="##other" processContents="lax" minOccurs="0"
maxOccurs="unbounded"/>
    </xs:sequence>
    <xs:anyAttribute namespace="##other" processContents="lax"/>
  </xs:complexType>
</xs:element>
<xs:element name="SequenceAcknowledgement">
  <xs:complexType>
    <xs:sequence>
      <xs:element ref="wsu:Identifier"/>
      <xs:choice>
        <xs:element name="AcknowledgementRange" maxOccurs="unbounded">
          <xs:complexType>
            <xs:sequence/>
            <xs:attribute name="Upper" type="xs:unsignedLong"
use="required"/>
            <xs:attribute name="Lower" type="xs:unsignedLong"
use="required"/>
          </xs:complexType>
        </xs:element>
        <xs:element name="Nack" type="xs:unsignedLong"
maxOccurs="unbounded"/>
      </xs:choice>
      <xs:any namespace="##other" processContents="lax" minOccurs="0"
maxOccurs="unbounded"/>
    </xs:sequence>
    <xs:anyAttribute namespace="##other" processContents="lax"/>
  </xs:complexType>
</xs:element>

```

```

<xs:complexType name="AckRequestedType">
  <xs:sequence>
    <xs:element ref="wsu:Identifier"/>
    <xs:element name="MaxMessageNumberUsed" type="xs:unsignedLong"
minOccurs="0"/>
    <xs:any namespace="##other" processContents="lax" minOccurs="0"
maxOccurs="unbounded"/>
  </xs:sequence>
  <xs:anyAttribute namespace="##other" processContents="lax"/>
</xs:complexType>
<xs:element name="AckRequested" type="wsrm:AckRequestedType"/>
<!-- Policy Assertions -->
<xs:element name="InactivityTimeout">
  <xs:complexType>
    <xs:complexContent>
      <xs:extension base="wsrm:PolicyAssertionType">
        <xs:attribute name="Milliseconds" type="xs:unsignedLong"
use="required"/>
      </xs:extension>
    </xs:complexContent>
  </xs:complexType>
</xs:element>
<xs:element name="BaseRetransmissionInterval">
  <xs:complexType>
    <xs:complexContent>
      <xs:extension base="wsrm:PolicyAssertionType">
        <xs:attribute name="Milliseconds" type="xs:unsignedLong"
use="required"/>
      </xs:extension>
    </xs:complexContent>
  </xs:complexType>
</xs:element>
<xs:element name="ExponentialBackoff" type="wsrm:PolicyAssertionType"/>
<xs:element name="AcknowledgementInterval">
  <xs:complexType>
    <xs:complexContent>

```

```

        <xs:extension base="wsrm:PolicyAssertionType">
            <xs:attribute name="Milliseconds" type="xs:unsignedLong"
use="required"/>
        </xs:extension>
    </xs:complexContent>
</xs:complexType>
</xs:element>
<xs:complexType name="PolicyAssertionType">
    <xs:sequence>
        <xs:any namespace="##other" processContents="lax" minOccurs="0"
maxOccurs="unbounded"/>
    </xs:sequence>
    <xs:anyAttribute namespace="##other"/>
</xs:complexType>
<xs:element name="SequenceCreation">
    <xs:complexType>
        <xs:complexContent>
            <xs:extension base="wsrm:PolicyAssertionType">
                <xs:attribute name="Value" type="xs:QName" use="required"/>
            </xs:extension>
        </xs:complexContent>
    </xs:complexType>
</xs:element>
<!-- Fault Container and Codes -->
<xs:simpleType name="FaultCodes">
    <xs:restriction base="xs:QName">
        <xs:enumeration value="wsrm:UnknownSequence"/>
        <xs:enumeration value="wsrm:SequenceTerminated"/>
        <xs:enumeration value="wsrm:InvalidAcknowledgement"/>
        <xs:enumeration value="wsrm:MessageNumberRollover"/>
    </xs:restriction>
</xs:simpleType>
<xs:simpleType name="Direction">
    <xs:restriction base="xs:QName">
        <xs:enumeration value="wsrm:Inbound"/>
        <xs:enumeration value="wsrm:Outbound"/>
    </xs:restriction>
</xs:simpleType>

```

```

    <xs:enumeration value="wsrm:Bidirectional"/>
  </xs:restriction>
</xs:simpleType>
<xs:complexType name="SequenceFaultType">
  <xs:sequence>
    <xs:element name="FaultCode" type="xs:QName"/>
    <xs:any namespace="##any" processContents="lax" minOccurs="0"
maxOccurs="unbounded"/>
  </xs:sequence>
  <xs:anyAttribute namespace="##any" processContents="lax"/>
</xs:complexType>
<xs:element name="SequenceFault" type="wsrm:SequenceFaultType"/>
<!-- Sequence Reference Domain Expression -->
<xs:complexType name="SequenceRefType">
  <xs:sequence>
    <xs:any namespace="##other" processContents="lax" minOccurs="0"
maxOccurs="unbounded"/>
  </xs:sequence>
  <xs:attribute name="Identifier" type="xs:anyURI" use="required"/>
  <xs:attribute name="Match" type="wsrm:MatchChoiceType"
use="optional"/>
  <xs:anyAttribute/>
</xs:complexType>
<xs:simpleType name="MatchChoiceType">
  <xs:restriction base="xs:QName">
    <xs:enumeration value="wsrm:Exact"/>
    <xs:enumeration value="wsrm:Prefix"/>
  </xs:restriction>
</xs:simpleType>
<xs:element name="SequenceRef" type="wsrm:SequenceRefType"/>
<xs:element name="CreateSequence"/>
<xs:element name="CreateSequenceResponse" type="wsrm:HandshakeType"/>
<xs:element name="TerminateSequence" type="wsrm:HandshakeType"/>
<xs:complexType name="HandshakeType">
  <xs:sequence>
    <xs:element ref="wsu:Identifier"/>

```

```

    <xs:any namespace="##other" processContents="lax" minOccurs="0"
maxOccurs="unbounded"/>
  </xs:sequence>
  <xs:anyAttribute namespace="##other" processContents="lax"/>
</xs:complexType>
</xs:schema>

```

## Appendix C Message Examples

### C.1 Create Sequence

#### Create Sequence

```

<?xml version="1.0" encoding="UTF-8"?>
<S:Envelope xmlns:S="http://www.w3.org/2003/05/soap-envelope"
xmlns:xsi="http://www.w3.org/2001/XMLSchema-instance"
xmlns:wsu="http://schemas.xmlsoap.org/ws/2002/07/utility"
xmlns:wsp="http://schemas.xmlsoap.org/ws/2002/12/policy"
xmlns:wsm="http://schemas.xmlsoap.org/ws/2004/03/rm"
xmlns:wsa="http://schemas.xmlsoap.org/ws/2003/03/addressing">
  <S:Header>
    <wsa:MessageID>
      http://Business456.com/guid/0baaf88d-483b-4ecf-a6d8-a7c2eb546817
    </wsa:MessageID>
    <wsa:To>http://fabrikam123.com/serviceB/123</wsa:To>
  </S:Header>
  <wsa:Action>http://schemas.xmlsoap.org/ws/2004/03/rm/CreateSequence</wsa:A
ction>
  <wsa:ReplyTo>
    <wsa:Address>http://Business456.com/serviceA/789</wsa:Address>
  </wsa:ReplyTo>
</S:Header>
  <S:Body>
    <wsm:CreateSequence/>
  </S:Body>
</S:Envelope>

```

#### Create Sequence Response

```

<?xml version="1.0" encoding="UTF-8"?>

```

```

<S:Envelope xmlns:S="http://www.w3.org/2003/05/soap-envelope"
xmlns:xsi="http://www.w3.org/2001/XMLSchema-instance"
xmlns:wsu="http://schemas.xmlsoap.org/ws/2002/07/utility"
xmlns:wsp="http://schemas.xmlsoap.org/ws/2002/12/policy"
xmlns:wsm="http://schemas.xmlsoap.org/ws/2004/03/rm"
xmlns:wsa="http://schemas.xmlsoap.org/ws/2003/03/addressing">
  <S:Header>
    <wsa:MessageID>
      http://fabrikam123.com/guid/0baaf88d-483b-4ecf-a6d8-a7c2eb546817
    </wsa:MessageID>
    <wsa:To>http://Business456.com/serviceA/789</wsa:To>
  </S:Header>
  <wsa:Action>http://schemas.xmlsoap.org/ws/2004/03/rm/CreateSequenceResponse</wsa:Action>
  <wsa:ReplyTo>
    <wsa:Address>http://fabrikam123.com/serviceB/123</wsa:Address>
  </wsa:ReplyTo>
</S:Header>
<S:Body>
  <wsm:CreateSequenceResponse>
    <wsu:Identifier>http://Business456.com/RM/ABC</wsu:Identifier>
  </wsm:CreateSequenceResponse>
</S:Body>
</S:Envelope>

```

## C.2 Initial Transmission

The following example WS-ReliableMessaging headers illustrate the message exchange in the above figure. The three messages have the following headers; the third message is identified as the last message in the sequence:

### Message 1

```

<?xml version="1.0" encoding="UTF-8"?>
<S:Envelope xmlns:S="http://www.w3.org/2003/05/soap-envelope"
xmlns:xsi="http://www.w3.org/2001/XMLSchema-instance"
xmlns:wsu="http://schemas.xmlsoap.org/ws/2002/07/utility"
xmlns:wsp="http://schemas.xmlsoap.org/ws/2002/12/policy"
xmlns:wsm="http://schemas.xmlsoap.org/ws/2004/03/rm"
xmlns:wsa="http://schemas.xmlsoap.org/ws/2003/03/addressing">
  <S:Header>

```

```

<wsa:MessageID>
  http://Business456.com/guid/71e0654e-5ce8-477b-bb9d-34f05cfc9e
</wsa:MessageID>
<wsa:To>http://fabrikam123.com/serviceB/123</wsa:To>
<wsa:From>
  <wsa:Address>http://Business456.com/serviceA/789</wsa:Address>
</wsa:From>
<wsrm:Sequence>
  <wsu:Identifier>http://Business456.com/RM/ABC</wsu:Identifier>
  <wsrm:MessageNumber>1</wsrm:MessageNumber>
</wsrm:Sequence>
</S:Header>
<S:Body>
  <!-- Some Application Data -->
</S:Body>
</S:Envelope>

```

## Message 2

```

<?xml version="1.0" encoding="UTF-8"?>
<S:Envelope xmlns:S="http://www.w3.org/2003/05/soap-envelope"
xmlns:xsi="http://www.w3.org/2001/XMLSchema-instance"
xmlns:wsu="http://schemas.xmlsoap.org/ws/2002/07/utility"
xmlns:wsp="http://schemas.xmlsoap.org/ws/2002/12/policy"
xmlns:wsm="http://schemas.xmlsoap.org/ws/2004/03/rm"
xmlns:wsa="http://schemas.xmlsoap.org/ws/2003/03/addressing">
  <S:Header>
    <wsa:MessageID>
      http://Business456.com/guid/daa7d0b2-c8e0-476e-a9a4-d164154e38de
    </wsa:MessageID>
    <wsa:To>http://fabrikam123.com/serviceB/123</wsa:To>
    <wsa:From>
      <wsa:Address>http://Business456.com/serviceA/789</wsa:Address>
    </wsa:From>
    <wsrm:Sequence>
      <wsu:Identifier>http://Business456.com/RM/ABC</wsu:Identifier>
      <wsrm:MessageNumber>2</wsrm:MessageNumber>
    </wsrm:Sequence>

```

```
</S:Header>
<S:Body>
  <!-- Some Application Data -->
</S:Body>
</S:Envelope>
```

### Message 3

```
<?xml version="1.0" encoding="UTF-8"?>
<S:Envelope xmlns:S="http://www.w3.org/2003/05/soap-envelope"
xmlns:xsi="http://www.w3.org/2001/XMLSchema-instance"
xmlns:wsu="http://schemas.xmlsoap.org/ws/2002/07/utility"
xmlns:wsp="http://schemas.xmlsoap.org/ws/2002/12/policy"
xmlns:wsm="http://schemas.xmlsoap.org/ws/2004/03/rm"
xmlns:wsa="http://schemas.xmlsoap.org/ws/2003/03/addressing">
  <S:Header>
    <wsa:MessageID>
      http://Business456.com/guid/0baaf88d-483b-4ecf-a6d8-a7c2eb546817
    </wsa:MessageID>
    <wsa:To>http://fabrikam123.com/serviceB/123</wsa:To>
    <wsa:From>
      <wsa:Address>http://Business456.com/serviceA/789</wsa:Address>
    </wsa:From>
    <wsm:Sequence>
      <wsu:Identifier>http://Business456.com/RM/ABC</wsu:Identifier>
      <wsm:MessageNumber>3</wsm:MessageNumber>
      <wsm:LastMessage/>
    </wsm:Sequence>
  </S:Header>
  <S:Body>
    <!-- Some Application Data -->
  </S:Body>
</S:Envelope>
```

## C.3 First Acknowledgement

Message number 2 has not been received by the RM Destination due to some transmission error so it responds with an acknowledgement for messages 1 and 3:

```
<?xml version="1.0" encoding="UTF-8"?>
```

```

<S:Envelope xmlns:S="http://www.w3.org/2003/05/soap-envelope"
xmlns:xsi="http://www.w3.org/2001/XMLSchema-instance"
xmlns:wsu="http://schemas.xmlsoap.org/ws/2002/07/utility"
xmlns:wsp="http://schemas.xmlsoap.org/ws/2002/12/policy"
xmlns:wsm="http://schemas.xmlsoap.org/ws/2004/03/m"
xmlns:wsa="http://schemas.xmlsoap.org/ws/2003/03/addressing">
  <S:Header>
    <wsa:MessageID>
      http://fabrikam123.com/guid/0baaf88d-483b-4ecf-a6d8-a7c2eb546817
    </wsa:MessageID>
    <wsa:To>http://Business456.com/serviceA/789</wsa:To>
    <wsa:From>
      <wsa:Address>http://fabrikam123.com/serviceB/123</wsa:Address>
    </wsa:From>
    <wsm:SequenceAcknowledgement>
      <wsu:Identifier>http://Business456.com/RM/ABC</wsu:Identifier>
      <wsm:AcknowledgementRange Upper="1" Lower="1"/>
      <wsm:AcknowledgementRange Upper="3" Lower="3"/>
    </wsm:SequenceAcknowledgement>
  </S:Header>
  <S:Body/>
</S:Envelope>

```

## C.4 Retransmission

The sending endpoint discovers that message number 2 was not received so it resends the message and requests an acknowledgment:

```

<?xml version="1.0" encoding="UTF-8"?>
<S:Envelope xmlns:S="http://www.w3.org/2003/05/soap-envelope"
xmlns:xsi="http://www.w3.org/2001/XMLSchema-instance"
xmlns:wsu="http://schemas.xmlsoap.org/ws/2002/07/utility"
xmlns:wsp="http://schemas.xmlsoap.org/ws/2002/12/policy"
xmlns:wsm="http://schemas.xmlsoap.org/ws/2004/03/m"
xmlns:wsa="http://schemas.xmlsoap.org/ws/2003/03/addressing">
  <S:Header>
    <wsa:MessageID>
      http://Business456.com/guid/0baaf88d-483b-4ecf-a6d8-a7c2eb546817

```

```

</wsa:MessageID>
<wsa:To>http://fabrikam123.com/serviceB/123</wsa:To>
<wsa:From>
  <wsa:Address>http://Business456.com/serviceA/789</wsa:Address>
</wsa:From>
<wsrm:Sequence>
  <wsu:Identifier>http://Business456.com/RM/ABC</wsu:Identifier>
  <wsrm:MessageNumber>2</wsrm:MessageNumber>
</wsrm:Sequence>
<wsrm:AckRequested>
  <wsu:Identifier>http://Business456.com/RM/ABC</wsu:Identifier>
</wsrm:AckRequested>
</S:Header>
<S:Body>
  <!-- Some Application Data -->
</S:Body>
</S:Envelope>

```

## C.5 Termination

The RM Destination now responds with an acknowledgement for the complete sequence which can then be terminated:

```

<?xml version="1.0" encoding="UTF-8"?>
<S:Envelope xmlns:S="http://www.w3.org/2003/05/soap-envelope"
xmlns:xsi="http://www.w3.org/2001/XMLSchema-instance"
xmlns:wsu="http://schemas.xmlsoap.org/ws/2002/07/utility"
xmlns:wsp="http://schemas.xmlsoap.org/ws/2002/12/policy"
xmlns:wsm="http://schemas.xmlsoap.org/ws/2004/03/rm"
xmlns:wsa="http://schemas.xmlsoap.org/ws/2003/03/addressing">
  <S:Header>
    <wsa:MessageID>
      http://fabrikam123.com/guid/0baaf88d-483b-4ecf-a6d8-a7c2eb546817
    </wsa:MessageID>
    <wsa:To>http://Business456.com/serviceA/789</wsa:To>
    <wsa:From>
      <wsa:Address>http://fabrikam123.com/serviceB/123</wsa:Address>
    </wsa:From>

```

```
<wsrm:SequenceAcknowledgement>
  <wsu:Identifier>http://Business456.com/RM/ABC</wsu:Identifier>
  <wsrm:AcknowledgementRange Upper="3" Lower="1"/>
</wsrm:SequenceAcknowledgement>
</S:Header>
<S:Body/>
</S:Envelope>
```

## Terminate Sequence

```
<?xml version="1.0" encoding="UTF-8"?>
<S:Envelope xmlns:S="http://www.w3.org/2003/05/soap-envelope"
xmlns:xsi="http://www.w3.org/2001/XMLSchema-instance"
xmlns:wsu="http://schemas.xmlsoap.org/ws/2002/07/utility"
xmlns:wsp="http://schemas.xmlsoap.org/ws/2002/12/policy"
xmlns:wsm="http://schemas.xmlsoap.org/ws/2004/03/rm"
xmlns:wsa="http://schemas.xmlsoap.org/ws/2003/03/addressing">
  <S:Header>
    <wsa:MessageID>
      http://Business456.com/guid/0baaf88d-483b-4ecf-a6d8-a7c2eb546817
    </wsa:MessageID>
    <wsa:To>http://fabrikam123.com/serviceB/123</wsa:To>
  </S:Header>
  <wsa:Action>http://schemas.xmlsoap.org/ws/2004/03/rm/TerminateSequence</wsa:Action>
  <wsa:From>
    <wsa:Address>http://Business456.com/serviceA/789</wsa:Address>
  </wsa:From>
</S:Header>
<S:Body>
  <wsrm:TerminateSequence>
    <wsu:Identifier>http://Business456.com/RM/ABC</wsu:Identifier>
  </wsrm:TerminateSequence>
</S:Body>
</S:Envelope>
```

## Appendix D WSDL

The non-normative WSDL definition for WS-ReliableMessaging is located at:

<http://schemas.xmlsoap.org/ws/2004/03/rm/rm.wsdl>

The following non-normative copy is provided for reference.

```
<wsdl:definitions xmlns:soap="http://schemas.xmlsoap.org/wsdl/soap/"
xmlns:wsdl="http://schemas.xmlsoap.org/wsdl/"

xmlns:xs="http://www.w3.org/2001/XMLSchema"
xmlns:tns="http://schemas.xmlsoap.org/ws/2004/02/rm"

targetNamespace="http://schemas.xmlsoap.org/ws/2004/02/rm">
  <wsdl:types>
    <xs:schema>
      <xs:import
        namespace='http://schemas.xmlsoap.org/ws/2004/02/rm'
schemaLocation='http://schemas.xmlsoap.org/ws/2004/02/rm/wsrn.xsd' />
      </xs:schema>
    </wsdl:types>
    <wsdl:message name="CreateSequence">
      <wsdl:part name="create" element="tns:CreateSequence"/>
    </wsdl:message>
    <wsdl:message name="CreateSequenceResponse">
      <wsdl:part name="createResponse"
element="tns:CreateSequenceResponse"/>
    </wsdl:message>
    <wsdl:message name="TerminateSequence">
      <wsdl:part name="terminate" element="tns:TerminateSequence"/>
    </wsdl:message>
    <wsdl:portType name="SequenceAbstractPortType">
      <wsdl:operation name="CreateSequence">
        <wsdl:input message="tns:CreateSequence"/>
        <wsdl:output message="tns:CreateSequenceResponse"/>
      </wsdl:operation>
      <wsdl:operation name="TerminateSequence">
        <wsdl:input message="tns:TerminateSequence"/>
      </wsdl:operation>
    </wsdl:portType>
  </wsdl:definitions>
```