

Comparative Analysis of Five XML Query Languages

Angela Bonifati

Stefano Ceri

Dipartimento di Elettronica e Informazione, Politecnico di Milano*

Piazza Leonardo da Vinci 32, I-20133 Milano, Italy

`bonifati/ceri@elet.polimi.it`

September 15, 1999

Abstract

XML is becoming the most relevant new standard for data representation and exchange on the WWW. Novel languages for extracting and restructuring the XML content have been proposed, some in the tradition of database query languages (i.e. SQL, OQL), others more closely inspired by XML. No standard for XML query language has yet been decided, but the discussion is ongoing within the World Wide Web Consortium and within many academic institutions and Internet-related major companies. We present a comparison of five, representative query languages for XML, highlighting their common features and differences.

1 Introduction to the five languages

1.1 LOREL

LOREL was originally designed for querying semistructured data and has now been extended to XML data; it was conceived and implemented at Stanford University (S. Abiteboul, D. Quass, J. McHugh, J. Widom, J. Wiener) and its prototype is at <http://www-db.stanford.edu/lore>. It is a user-friendly language in the SQL\OQL style, it includes a strong mechanism for type coercion and permits very powerful path expressions, extremely useful when the structure of a document is not known in advance [AQ*97, AG*97, GMW99].

1.2 XML-QL

XML-QL was designed at AT&T Labs (A. Deutsch, M. Fernandez, D. Florescu, A. Levy, D. Suciu); its prototype is reachable at the url: <http://www.research.att.com/sw/tools/xmlql> as part of the Strudel Project.

* This research was done when the authors were visiting Stanford University. We acknowledge the support of ESPRIT Project 28771 W3I3, MURST Project Interdata, CNR-CESTIA, and the HP Internet Philanthropic Initiative.

The XML-QL language extends SQL with an explicit CONSTRUCT clause for building the document resulting from the query and uses the *element patterns* (patterns built on top of XML syntax) to match data in a XML document. XML-QL can express queries as well as transformations, for integrating XML data from different sources [DF*98, DF*99].

1.3 XML-GL

XML-GL is a graphical query language, relying on a graphical representation of XML documents and DTDs by means of labelled *XML graphs*. It was designed at Politecnico di Milano (S. Ceri, S. Comai, E. Damiani, P. Fraternali, S. Paraboschi and L. Tanca); an implementation is ongoing. All the elements of XML-GL are displayed visually; therefore, XML-GL is suitable for supporting a user-friendly interface (similar to QBE) [C*99, B*99].

1.4 XSL

The Extensible Stylesheet Language (XSL) has facilities that could serve as a basis for an XML query language. An XSL program consists of a collection of template rules; each template rule has two parts: a pattern which is matched against nodes in the source tree and a template which is instantiated to form part of the result tree. XSL makes use of the expression language defined by XPath [C199b] for selecting elements for processing, for conditional processing and for generating text. It was designed by the W3C XSL working group (J. Clark editor) [C199a, SLR98, W*98] .

1.5 XQL

XQL is a notation for selecting and filtering the elements and text of XML documents. XQL can be considered a natural extension to the XSL pattern syntax; it is designed with the goal of being syntactically very simple and compact (a query could be part of a URL), with a reduced expressive power. It was designed by J. Robie, Texcel Inc., J. Lapp, webMethods, Inc., and D. Schach, Microsoft Corporation [RLS98, Ro99a, Ro99b, Ro99c, SLR98].

1.6 Other languages

Several other languages for XML have been proposed, including XMAS [LP*99] and XQuery [DeR98].

2 Features Classification

In the following, we examine how the considered languages support the various features of database query languages.

A. Data Model

1. *Specific data model.* The designers of LOREL, XML-QL, XML-GL and XSL have felt the need of introducing their own data model explicitly, while XQL relies on the data modeling features of XML.

LOREL: Yes XML-QL: Yes XML-GL: Yes XSL: Yes XQL: No

In the LOREL data model, an XML element is a pair $\langle eid, value \rangle$, where *eid* is a unique *element identifier*, and *value* is either an atomic text string or a complex value containing a string-valued *tag*, followed by a (possibly empty) ordered list of pairs of attribute names and atomic values (representing XML attributes), followed by a (possibly empty) ordered list of pairs $\langle eid, value \rangle$ called *crosslink subelements* (representing XML IDREF attributes), followed by a (possibly empty) ordered list of pairs $\langle eid, value \rangle$ called *normal subelements* (representing the XML containment relationship). A graph representation of the data model is provided; nodes correspond to the XML data elements and edges are designed as either *crosslink edges* or *normal edges*; edges are labeled. Each XML graph has one or more node designed as *entry points*.

In XML-QL, an XML document is modeled by an *XML Graph*; each node is associated to an *object identifier* (OID); edges are labeled with element tag identifiers, intermediate nodes are labeled with sets of attribute-value pairs representing attributes, leaves are labeled with values (e.g., CDATA or PCDATA); each graph has a distinguished node called the *root*.

In XML-GL, an *XML Graphical Data Model (XML-GDM)* is used to represent both XML DTDs and actual documents; XML-GDM is also used for formulating queries. XML elements are represented as rectangles and properties as circles; these include attributes (as pairs of label and value) as well as printable values CDATA or PCDATA (with value but no label); IDREFs are denoted by black circles. Edges between nodes represent containment or reference relationships.

XSL operates on source, result and stylesheet documents using the same data model, defined in the XPath specification. An XML document is modeled as a tree that contains seven types of nodes (root nodes, element nodes, text nodes, attribute nodes, namespace nodes, processing instruction nodes and comment nodes). For every type of node, there is a way of determining a *string value* for it, that is either part of the node or computed from the string-values of its descendants. Some types of node also have an expanded name, which is a pair consisting of a local part and a namespace URI.

XQL designers assume the “XML implied data model”, highlighting that each node has a type and either content or a value, and that semantic relationships between nodes can be hierachical (parent/child, ancestor/descendant), positional (absolute, relative, range) and sequential (precedes, immediately precedes) [Ro99c].

All of the data models introduced in LOREL, XML-QL, XML-GL and XSL may consider the elements in a given XML document as either unordered or ordered; however, only XML-QL is able to query the ordering of the underlying data model, as discussed in point G.3.

The data models of LOREL, XML-QL, and XML-GL are substantially equivalent; the only significant difference concerns the management of IDREFS, which is discussed next. XSL data model is a tree rather than a graph, so it cannot be considered equivalent to the previous ones.

2. *Differential management of IDREFs.* To support element sharing, XML reserves an attribute of type ID, which associates an unique key to the element. An attribute of type IDREF allows an element to refer to another element with the designed key. Thus, IDREFs are particular strings that can be interpreted as references between elements. With such an interpretation, it is possible to navigate from one element to another; the data model supports *object references*, possibly cyclic. However, if IDREFs are interpreted as strings, then nodes are connected only by containment relationships, and the data model does not support object references. These two interpretations of IDREFs may lead to two different interpretations of the same query. We indicate this property as differential management of IDREFs.

LOREL: Yes XML-QL: No XML-GL: No XSL: No XQL: No

In LOREL, there are two modes of viewing the data model: *semantic* and *literal*. In the semantic mode, the database is viewed as an interconnected graph; in the literal mode, the database is viewed as an XML tree, and IDREFs are represented as textual strings. ¹

B. Basic Query Abstractions

1. *Document selection.* Given a document and a query on the document, the document selection is the result of the application of the query to the document, picking up the elements, specified in the select expression of the query, that satisfy the query condition.

LOREL: Yes XML-QL: Yes XML-GL: Yes XSL: Yes XQL: Yes

Of course this feature is supported by all the languages. We next introduce simplified descriptions of the syntax of the five languages.

A query in LOREL is structured according to the following, simplified grammar (for full details, the reader can refer the [AQ*97] paper) ²:

```
'select' { select_expr }
[ 'from' { from_expr } ]
[ 'where' { where_expr } ]
```

¹`FollowLinks` is a command line directive which enables the semantic interpretation of the data model in the Lore implementation.

²We use a BNF notation where nonterminals are enclosed within quotes, curly brackets denote a list of zero or more elements separated by commas, square brackets denote optionality, and the symbol | denotes alternatives.

Select expressions, from expressions, and where expressions, as in OQL, can in turn contain queries.

A simplified syntax for defining a query in XML-QL is:

```
Query ::= 'where' { Predicate }
        'construct' { '{' Query '}' }
```

The result specified in the `construct` clause is a piece of XML document, fully specified in terms of tag names and content; content is typically constructed from the object bindings which are determined by the predicate evaluation (for full details on the XML-QL syntax, see [DF*98]).

An XML-GL query consists of two sets of directed acyclic graphs displayed side by side and separated by a vertical line, where the LHS express the query sources (which documents are selected) and predicate (which condition must be satisfied), while the RHS represents the construction (which document is produced as result); explicit connections or implicit homonyms, where unambiguous, indicate the bindings between the LHS and RHS.

In XSL, a template rule is specified within the `xsl:template` tags. The `match` attribute is a pattern that identifies the source node or nodes to which the rule applies. If it is omitted, the template rule is matched against all the nodes of the document. The following is the approximate skeleton of a template rule (see [C199a] for complete information):

```
<xsl:template [ 'match=' pattern_expr ] '>
  {<xsl:directive>}
  {<result-elements>}
</xsl:template>
```

where `pattern_expr` represents an expression written in the XPath language (see section C.1 for more details), `result-elements` are the new elements' tags produced in the result and `xsl:directive` is one of the following (for a complete list, refer to [C199a]):

```
<xsl:apply-templates [ 'select=' pattern_expr ] '>
<xsl:for-each [ 'select=' pattern_expr ] '>
<xsl:value-of [ 'select=' pattern_expr ] '>
<xsl:copy-of [ 'select=' pattern_expr ] '>
```

where the `select` attribute is used to process nodes selected by an expression instead of the all children of the current node. The `xsl:apply-templates` directive invokes the application of templates which are separately defined; the `xsl:for-each` directive iterates on other directives which are statically nested within it; the `xsl:value-of` directive extracts information from a pattern expression and converts it into a string; the `xsl:copy-of` directive extracts information from a pattern expression and puts it into the result, with its original format.

The basic XQL syntax mimics the URI directory navigation syntax, but instead of specifying navigation through a physical structure, the navigation is through elements in the XML tree. A simplified syntax for XQL is (see [RLS98] for the complete syntax):

```
Query ::= [ './' | '/' | '//' | './..' ] Element [ '[' Predicate ']' ] [Path]
Path  ::= [ '/' | //' ] Element [ '[' Predicate ']' ] [Path]
```

Therefore, a query is specified along a specific hierarchical path within the document; predicates (filters in XQL terminology) typically apply to the elements being accessed during the navigation along the path, although syntactically they may reach elements which are quite distant in the hierarchical structure.

2. *Joins*. A join condition compares two or more XML attributes or data belonging to the same document or to two different documents. The typical comparison (equality) is called equi-join.

LOREL: Yes XML-QL: Yes XML-GL: Yes XSL: No XQL: No

In LOREL, join conditions are fully supported, within the same document and among several documents. They are written in a SQL-like form, by explicitly specifying the variables involved in the joins.

In XML-QL, joins are implicitly expressed by means of the equality on variable names, which must match their value. They can range on the same document or on several different documents, defining arbitrary join conditions (e.g., n -way joins correspond to associating the same variable name to n labels in the query).

In XML-GL, join conditions are expressed by connecting, by means of a comparison operator, two node leaves of XML documents, representing arbitrary attributes or data; equi-joins are represented by edges pointing to the same node, possibly with two labels (in many cases joined nodes have the same label).

XSL does not allow neither joins nor semi-joins: each template rule currently addresses a single document and no connection conditions can be built within the same document or among several documents.

XQL allows semi-joins, i.e., joins of data which is reachable along a path with other data which may be present in the same document; it does not allow joins among different documents. For instance, it is possible to ask for all books whose author is the same as the author of Moby Dick within a given document:

```
book[author=//book[title='Moby Dick']/author]
```

3. *Semantics of the query result*. The result of a query can be defined in terms of the current content of the database (i.e., by pointing to object identifiers of nodes in the document base) or as a new document, which can be then queried and possibly updated independently. In general, we expect that

all languages can adapt to either solutions. We anyway indicate the default solution adopted by the five languages.

LOREL: Set of OIDs XML-QL: XML Doc XML-GL: XML Doc XSL: XML Doc
XQL: XML Doc

In LOREL, the result of a query is a set of object identifiers pointed by a new element. Therefore, the standard interpretation is that the current state of objects being selected is the one present in the database, and subsequent accesses to the query result may give different documents. In LOREL it is also possible to define views (*with* clause), and in such case the query returns a document with all the nodes which are specified by the *with* clause. In the standard interpretations, XML-QL, XML-GL, XSL and XQL return new documents, whose content is then independent on subsequent database manipulations.

C. Path expressions

1. *Partially specified path expressions.* When querying semistructured data, especially when the exact structure is not known, it is convenient to use a form of “navigational” query based on path expressions. The most powerful form of path expression does not need to list all the elements of the path, as it uses wildcards and regular expressions: we denote it as a partially specified path expression. All languages support partially specified path expression and actually consider this feature as one of the most important in the language.

LOREL: Yes XML-QL: Yes XML-GL: Partially XSL: Yes XQL: Yes

In LOREL, path expressions are very powerful and flexible; they admit several *Unix-like wildcards*. Each path expression must have a context (the root element of the document).

In XML-QL, path expressions are admitted within the tag specification and they permit the alternation, concatenation and Kleene-star operators, similar to those used in regular expressions. XML-QL path expressions have the same expressive power as those of LOREL.

In XML-GL, the only path expressions supported are arbitrary containment, by means of a wildcard * as edge label; this allows traversing the XML-GL graph reaching an element at any level of depth.

In both XSL (XPath language) and XQL, path expressions define relative and absolute locations. A relative location path consists of one or more location steps (XML nodes) separated by the child ‘/’ operator or by the descendant ‘//’ operator. An absolute location path has a ‘/’ or ‘//’ optionally followed by a relative location path. Admitted wildcards are both alternation and Kleene-star closure operator.

2. *Matching of partially specified expressions with cyclic data.* Partially specified expressions may be the source of infinite computations in the case of cyclic instances. Therefore, it is common practice to

specify halt conditions in the matching algorithm that binds object instances to path expressions when the same object binding is associated to the same query node more than once.

LOREL: Yes XML-QL: Undefined XML-GL: Yes XSL: No XQL: Undefined

Some systems do not mention the halt condition as part of the query language semantics (we expect it to be part of the implementation).

In XSL, `xsl:apply-templates` are used to process only nodes that are descendants of the current node, and this cannot result in non-terminating processing loops. However, non-terminating loops may arise when `xsl:apply-templates` is used to process elements that are not descendants of the current node. For example:

```
<xsl:template match="foo">
  <xsl:apply-templates select="."/>
</xsl:template>
```

Implementations may be able to detect such loops in some cases, but the possibility exists that a stylesheet may enter a non-terminating loop that an implementation is unable to detect.

D. Quantification, Negation, and Reduction

1. *Existential quantification.* An existential predicate over a set of instances (e.g., bound to a variable) is satisfied if at least one of the instances satisfies the predicate.

LOREL: Yes XML-QL: Yes XML-GL: Yes XSL: Yes XQL: Yes

In all languages, predicates are assumed as existentially quantified.

2. *Universal quantification.* A universal predicate over a set of instances (e.g., bound to a variable) is satisfied if all the instances satisfies the predicate.

LOREL: Yes XML-QL: No XML-GL: No XSL: No XQL: Yes

In LOREL, a variable can be universally quantified with the SQL-like predicate `for all`. Similarly, in XQL universal quantification is obtained by prefixing a predicate expression with the keyword `all`. In XML-QL and XML-GL³ universal quantification cannot be expressed. In the XSL pattern language, conditions cannot be universally quantified.

3. *Negation.* The negation of a predicate over a set of instances is satisfied if none of the instances satisfies the predicate.

³However, in XML-GL the presence of negation and existential quantification allows the expression of universal quantification by means of views.

LOREL: Yes XML-QL: No XML-GL: Yes XSL: Yes XQL: Yes

In LOREL, a predicate is negated with the key-word `not`. In XML-GL, the negation is expressed graphically by a dashed edge (see Figure 1, where all professors without a name element are selected). In XQL, the boolean operator `not` negates the value of an expression within a filter, e.g.:

```
professor[$not$ name]
```

Its meaning is to select all the instances of the context associated with the filter with a negation predicate where the expression is false or not valuable (e.g. the name attribute is missing). XML-QL does not support negation (it supports the unequal comparison operator in simple predicate expressions). In the XSL pattern language, negation is expressed by means of the boolean function having the prototype `boolean not (boolean)` that returns a boolean and operates on a boolean value (a number, a string, a node set and an object can be converted to their boolean value applying the `boolean boolean (object)` function).

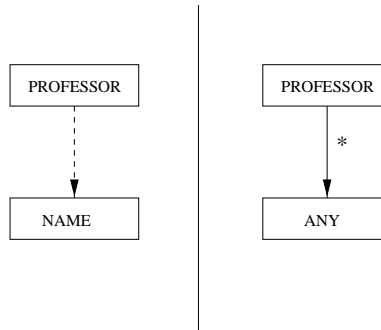


Figure 1: Example of negation in XML-GL

4. *Reduction*. Given a document and a query on this document, the reduction prunes from the document those elements specified in the selection part of the query that satisfy its condition.

LOREL: No XML-QL: No XML-GL: No XSL: No XQL: No

In LOREL, XML-QL, XML-GL and XSL document reduction is not supported, also if it could be obtained through a construction which includes only the elements that should remain. This is feasible only when the underlying DTD of the document is known in advance. In XQL no construction can be expressed, and therefore this approach is not feasible.

E. Restructuring abstractions

1. *Building new elements*. A new XML element can be created through the query's construction mechanism.

LOREL: Yes XML-QL: Yes XML-GL: Yes XSL: Yes XQL: No

In LOREL, a new XML element is built by invoking the `xml()` function with three parameters (the first two not mandatory): the type, the label and the value(s), explicitly given through the OID or implicitly given specifying the query that generate it.

In XML-QL, restructuring is specified in the `Construct` clause, which contains the new tags, constants, and variables (bound from the XML-QL predicate evaluation) of the new document, arbitrarily named.

In XML-GL, a new element is constructed through a new element box arbitrarily named. New elements can be added and arbitrarily named.

In XSL, the new elements of the query result are specified through their tag names within the template rule.

In XQL, no new element can be added to the existing ones, because no construction mechanism is provided.

2. *Grouping.* Elements of the result can be aggregated or reorganized as specified by means of special functions, such as `group by`.

LOREL: Yes XML-QL: No XML-GL: Yes XSL: No XQL: No

In LOREL, the `group by` clause is that inherited from the OQL language. Objects extracted in XML-GL can be grouped according to the distinct values of one of their attributes or PCDATA; each class is associated to an element instance carrying the representative value of the class and then the rest of the XML tree as sub-element. Apparently, a group-by clause is missing from the current descriptions of XML-QL, XSL and XQL.

3. *OID invention with a Skolem function.* A Skolem function associates to a given value a unique, generated OID; the Skolem function applied to the same value produces the same OID. Skolem functions are needed for integrating existing documents into one.

LOREL: Yes XML-QL: Yes XML-GL: Partially XSL: No XQL: No

In LOREL, XML-QL and XML-GL the Skolem function takes as input a list of variables as argument and returns one unique element for every binding of elements and/or attributes to the argument. In Lorel and XML-QL, the Skolem function associates to each element a unique object identifier, that can be referenced by means of variables; XML-GL, instead, does not provide the possibility of explicitly referencing the object identifiers. In XSL and XQL, the Skolem functions are not used.

F. Aggregation, Nesting, and Binary Queries

1. *Aggregates.* Aggregate functions compute a scalar value out of a multi-set of values. Classical aggregates, supported by SQL, are `min`, `max`, `sum`, `count`, `avg`.

LOREL: Yes XML-QL: No XML-GL: Yes XSL: Partially XQL: Partially

In LOREL, the aggregate functions are present and fully implemented. In XML-QL, as of the current date they are not supported, but they are indicated as to be supported in the next version. In XML-GL, aggregates are represented graphically. In XSL and XQL, we found the method `count()` that evaluates to the number of reference nodes that appear in the associated set. We are not aware of further aggregate functions.

2. *Nesting of queries.* As in SQL, a query can be composed of nested subqueries.

LOREL: Yes XML-QL: Yes XML-GL: No XSL: Yes XQL: No

In LOREL and in XML-QL, both inspired to the SQL paradigm, queries can be nested at an arbitrary level. In XML-GL and XQL nesting is not supported. In XSL, templates can be nested.

3. *Binary queries.* As in SQL, a query can be binary, composed of the union, intersection, or difference of subqueries.

LOREL: Yes XML-QL: Partially XML-GL: Yes XSL: Yes XQL: Yes

LORES supports union, difference, and intersection. XML-QL supports union and intersection but has no difference. In XML-GL, queries allow multiple graphs in the left side of the query; this gives the expressive power of union. Negation gives to XML-GL the expressive power of a difference, and intersection can be built by repeatedly applying negation. XSL admits union and negation in the pattern language; there is not explicit intersection. XQL supports union and intersection; negation gives to XQL the expressive power of a difference.

G. Order Management

1. *Ordering the result.* Consists of ordering the element instances according to the ascending or descending values of some data of the result, as performed by the `order by` clause in SQL.

LOREL: Yes XML-QL: Yes XML-GL: Yes XSL: Yes XQL: No

LOREL and XML-QL may order the result is gained through the `order by` clause. In XML-GL, a leaf node can be labelled with `ASC`, `DESC` `ORDER` and the elements extracted are in ascending or descending order wrt that node; multiple labelings are possible. In XSL, sorting is specified by adding `xsl:sort` elements as children of `xsl:apply-templates` or `xsl:for-each`. Each `xsl:sort` specifies a sort key: the elements are ordered according to the specified sort keys, instead of being ordered on the basis of the document order (default). In XQL, it looks that there are not clauses concerning the order of the result.

2. *Order-preserving result.* Consists of ordering the elements in the result in the same way as the original document.

LOREL: Yes XML-QL: Yes XML-GL: Yes XSL: Yes XQL: Yes

In LOREL, the `order by document order` means that the retrieved elements are ordered in the same way as the original document, and the new ones are placed at the end of the document with an unspecified order among them; otherwise, the order of elements in the result is left unspecified. XML-QL, XSL and XQL produce ordered XML, therefore the order can be specified to be the same as the source document (but such an order must be known). XML-GL produces an ordered XML element when one of the edges is marked (then, the elements are produced in counterclockwise order wrt the marked edge).

3. *Querying the schema order.* Consists of asking for XML elements and/or attributes in a given order relationship, as they are specified in the schema.

LOREL: No XML-QL: Yes XML-GL: No XSL: No XQL: No

In XML-QL it is possible to query about the relative position of tags within documents (asking if a tag precedes or follows another tag); this is not supported by the other languages.

4. *Querying the instance order.* Consists of asking for XML elements and/or attributes in a given order relationship, as they appear in the instance of the document. This is accomplished adding to the language the range qualifier operator, that enables the selection of a single number (or of a set of numbers) instances.

LOREL: Yes XML-QL: No XML-GL: No XSL: Yes XQL: Yes

In Lorel, the operator “[<range>]” is introduced into both the query and update language and it is applied against both a path expression or variable. In XML-QL and XML-GL, it seems that there is no range selection. In XSL pattern language and in XQL, a specific node within a set of nodes is extracted simply enclosing the index ordinal within square brackets in the pattern.

H. Typing & Extensibility

1. *Support of abstract data types.* This feature concerns the necessity of embedding inside an XML query language specialized operations, i.e for selecting different kinds of multimedia content.

LOREL: Yes XML-QL: No XML-GL: No XSL: No XQL: No

LOREL supports audio, video, images, and specialized data types such as Jpeg, Gif, and Ps.

2. *Type coercion.* This feature concerns the ability of implicit data casting among different types, as well as the ability to compare values represented with different type constructors (e.g., scalars, singleton sets, and lists with one only element). Because of the nature of semistructured data, the type coercion provided by an XML query language should be much more flexible than that of a database query language.

LOREL: Yes XML-QL: No XML-GL: No XSL: No XQL: Partially

In LOREL, comparison between objects and/or values is forced to do “the most intuitive thing” when comparing objects and values of different types. Coercion rules are provided for the various atomic types and the corresponding predicates or functions. Furthermore, a comparison between atomic objects, complex objects, and sets of objects is accepted when there is an obvious interpretation.

In XQL, two values are comparable only after explicit casting of them, as happens in a traditional programming language. The other languages do not mention type coercion.

I. Integration with XML

1. *Support of RDF and/or XML Schemas.* RDF and XML Schemas are emerging standards for representation of metadata regarding XML documents and it may be desirable to embed them into the query language.

LOREL: No XML-QL: No XML-GL: No XSL: No XQL: No

2. *Support of XPointer and XLink.* Intra-document and inter-document linking could influence the evolution of the XML query language; a query should be able to give as result not only XML data, but also XML pointers and links.

LOREL: No XML-QL: No XML-GL: No XSL: No XQL: No

3. *Support of tag variables.* This feature concerns the possibility of explicitly querying the tag name rather than the tag content.

LOREL: Yes XML-QL: Yes XML-GL: No XSL: No XQL: No

In LOREL, path expressions return into variables of a special *path* type the fully specified names of all paths that are reachable from the path expressions themselves. Such names can be used for building the names of the query result using the `unquote()` function. In XML-QL, variables can be associated to tags and then used to generate the tags of the result.

J. Update language

1. *Support for insert, delete, and update of elements.*

LOREL: Yes XML-QL: No XML-GL: Yes XSL: No XQL: No

LOREL has an `update` language. It is possible to create and delete object names, create a new atomic or complex object, and modify the value of an existing object. Update operations in XML-GL are graphically indicated as arrows labelled with I, D, U. Each primitive (except for delete that does not need the RHS) has a LHS element and a RHS graph: the LHS is the target element of the operation and the RHS graph represents the values to be inserted or replaced by the primitive. In XML-QL, XSL and XQL there is no update language.

3 Comparative examples

In the following, we present a comparison of LOREL, XML-QL, XML-GL and XQL on the basis of the query examples originally proposed by David Maier in a Position Paper “Database Desiderata for an XML Query Language” [Mai98]; a preliminary version of the XML-QL examples were originally presented by Peter Fankhauser in a message to the XML Query language mailing list (message of Dec 22, 1998). The underlying case study is that of a car dealer office, with documents from different auto dealers and brokers. The `manufacturer` documents list the manufacturer’s name, year, and models with their names, front rating, side rating, and rank; the `vehicle` documents list the vendor, make, year, color and price. We consider XML data of the form:

```
<manufacturer>
<mn_name>Mercury</mn_name>
<year>1999</year>
<model> <mo_name>Sable LT</mo_name>
<front_rating>3.84</front_rating>
<side_rating>2.14</side_rating>
<rank>9</rank>
</model>
....
</manufacturer>

<vehicle>
<vendor>Scott Thomason</vendor>
<make>Mercury</make>
<model>Sable LT</model>
<year>1999</year>
<color>metallic blue</color>
....
<price>26800</price>
</vehicle>
```

3.1 Query 1: Selection and Extraction

We want to select and extract < manufacturer > elements where some < model > has < rank > less or equal to 10.

1A. LOREL

```
select M
from nhsc.manufacturer M
where M.model.rank <=10
```

1B. XML-QL

```
WHERE <manufacturer>
      <model>
```

```

    <rank>$r</rank>
  </model>
</manufacturer> ELEMENT_AS $m IN www.nhsc\manufacturers.xml ,
  $r<=10
CONSTRUCT $m

```

1C. XML-GL See Figure 2:

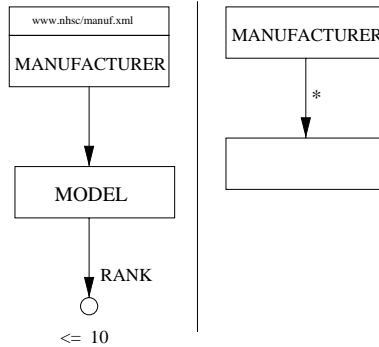


Figure 2: Query 1

1D. XSL

```

<xsl:template match="/">
  <xsl:for each select="manufacturer[model/rank<=10]">
    <xsl:value-of />
  </xsl:for each>
</xsl:template>

```

1E. XQL

```
manufacturer[model/rank<=10]
```

COMMENTS

- In LOREL, the result is a collection of manufacturer object identifiers.
- In XML-QL, the query applies to the XML document `www.nsch/manufacturers.xml`. It matches every `< manufacturer >` in the XML document that has at least one `< model >`, whose `< rank >` is less or equal to 10. The presentation of the result is a piece of XML document whose exact structure appears not to be defined in the references currently available.
- In XML-GL, the query applies to the XML document `www.nsch/manufacturers.xml`; it extracts all the occurrences of the manufacturer elements satisfying the conditions stated in the LHS side. The elements used in the RHS to construct the result are exactly those manufacturer objects retrieved in the LHS with all the sub-elements as appearing in the input XML documents (but without including the elements pointed by IDREFs links). The result is a new XML document enclosed within the standard element `result`.

- In XSL, the rule applies to the root node and the `xsl:for-each` directive is instantiated for each `manufacturer` node having at least one `model` whose `rank` is less or equal to 10. Through the `xsl:value-of` instruction a text node is included in the result tree for each selected `manufacturer` element.
- XQL does the job pretty concisely, having a navigation pattern with a filter condition on the `<rank>`. The filter is existentially quantified. The result is conventionally enclosed within a standard element named `xql:result`.
- Summary: All languages cover the example.

3.2 Query 2: Reduction

From the `<manufacturer>` elements, we want to drop those `<model>` sub-elements whose `<rank>` is greater than 10. We also want to elide the `<front_rating>` and `<side_rating>` elements from the remaining models.

2A. LOREL

```
select Z.mn_name, Z.year,
       (select Z.model.mo_name, Z.model.rank
        where Z.model.rank <= 10)
from nhsc.manufacturer Z
```

2B. XML-QL

```
WHERE <manufacturer>
      <mn_name>$mn</mn_name>
      <year>$y</year>
      </manufacturer> CONTENT_AS $m IN www.nhsc\manufacturers.xml
CONSTRUCT
      <manufacturer>
        <mn_name>$mn</mn_name>
        <year>$y</year>
        { WHERE <model>
              <mo_name>$mon</mo_name>
              <rank>$r</rank>
            </model> IN $m,
          $r<=10
        CONSTRUCT<model><mo_name>$mon</mo_name><rank>$r</rank></model>
        }
      </manufacturer>
```

2C. XML-GL See Figure 3:

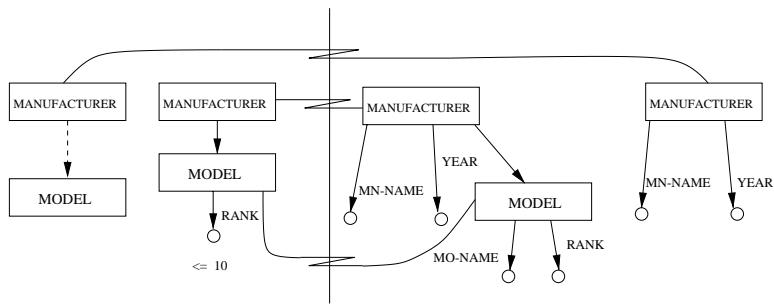


Figure 3: Query 2

2D. XSL

```
<xsl:template match="manufacturer[model/rank<=10]">
  <model>
    <xsl:value-of select="mo-name"/>
    <xsl:value-of select="rank"/>
  </model>
</xsl:template>
```

2E. XQL

Cannot be expressed.

COMMENTS

- In LOREL the job is performed by nesting two queries one inside the other; both are existentially quantified.
- Also in XML-QL, the job is performed by nesting two subqueries; nesting occurs within the construct clause of the first query.
- XML-GL has no nesting, so the query selects first the elements of *< manufacturer >* that do not have a *< model >* sub-element and puts them in the result; then, it selects those elements having at least one *< model >* element with suitable *< rank >* value and inserts them in the result, by including only the selected models.
- In XSL, the template rule matches the *manufacturer* elements satisfying the condition and, then, constructs the new *model* elements with the subelements *mo-name* and *rank*.
- In XQL, the query cannot be expressed neither as reduction nor as construction, because XQL does not allow restructuring, nested queries or joins.
- Summary: This example indicates that current query languages lack of one relevant feature: reduction. All languages must resort to a solution based on the construction of the “remainder” of the document, rather than eliding some elements. This is possible only if the DTD of the document is known. XQL does not support construction, so it cannot use this solution.

3. Query 3: Joins

We want our query to generate pairs of `< manufacturer >` and `< vehicle >` elements where `< mn_name >` = `< make >`, `< mo_name >` = `< model >` and `< year >` = `< year >`.

3A. LOREL

```
temp:= select (M,V) as pair
        from nhsc.manufacturer M, nhs.vehicle V
        where M.mn_name = V. make
        and   M.model.mo_name = V.model
        and   M.year = V.year
```

3B. XML-QL

```
WHERE <manufacturer>
      <mn_name>$mn</mn_name>
      <year>$y</year>
      <model>
        <mo_name>$mon</mo_name>
      </model> CONTENT_AS $mo
</manufacturer> CONTENT_AS $m IN www.nhsc\manufacturers.xml
<vehicle>
      <model>$mon</model>
      <year>$y</year>
      <make>$mn</make>
</vehicle> CONTENT_AS $v IN www.nhsc\vehicles.xml
CONSTRUCT
      <manufacturer>
        <mn_name>$mn</mn_name>
        <year>$y</year>
        <vehiclemodel>
          $mo,$v
        </vehiclemodel>
      </manufacturer>
```

3C. XML-GL See Figure 4:

3D. XSL

Cannot be expressed.

3E. XQL

Cannot be expressed.

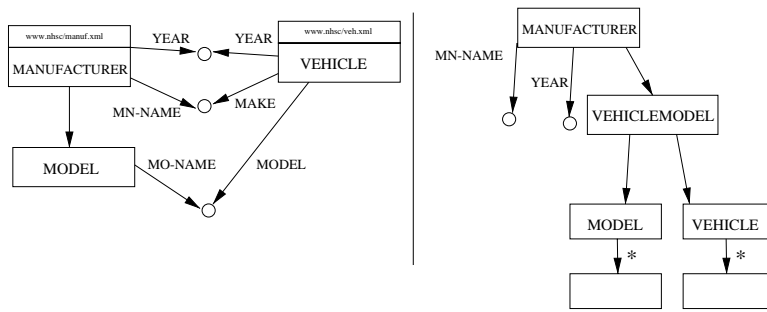


Figure 4: Query 3

COMMENTS

- In LOREL, the join builds pairs of OIDs of the relevant documents after their joins. The joined elements are accessed creating a new entry point *temp*.
- In XML-QL, a new piece of XML document is created and wrapped into the tags `< vehiclemodel >`, with the content of the `< model >` and `< vehicle >` elements that match on join conditions.
- In XML-GL, the pairs from `< model >` and `< vehicle >` are extracted and made the sub-elements of a new element named `< vehiclemodel >`, which is placed inside the `< manufacturer >` element.
- In XSL, joins cannot be expressed.
- XQL does not support joins.
- Summary: Join is supported well by LOREL, XML-QL and XML-GL; XSL and XQL lack the possibility of joining two documents.

4. Query 4: Restructuring

We want our query to collect `< car >` elements listing their make, model, vendor, rank, and price, in this order.

4A. LOREL

```
select xml(car: (select X.vehicle.make, X.vehicle.model,
                    X.vehicle.vendor, X.manufacturer.rank,
                    X.vehicle.price
                    from temp.pair X))
```

4B. XML-QL

```
WHERE <manufacturer>
      <mn_name>$mn</mn_name>
      <vehiclemodel>
            <model>
```

```

    <mo_name>$mon</mo_name>
    <rank>$r</rank>
  </model>
  <vehicle>
    <price>$y</price>
    <vendor>$mn</vendor>
  </vehicle>
</vehiclemodel>
</manufacturer> IN www.nhsc\queryresult3.xml
CONSTRUCT
  <car>
    <make>$mn</make>
    <mo_name>$mon</mo_name>
    <vendor>$v</vendor>
    <rank>$r</rank>
    <price>$p</price>
  </car>

```

4C. XML-GL See Figure 5:

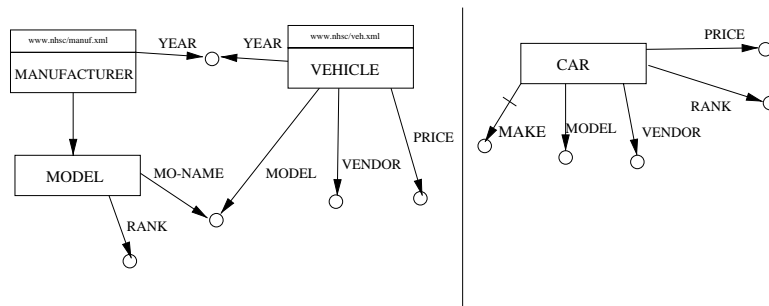


Figure 5: Query 4

4D. XSL

```

<xsl:template match="manufacturer">
  <car>
    <xsl:value-of select="vehiclemodel/vehicle/make"/>
    <xsl:value-of select="vehiclemodel/model/mo-name"/>
    <xsl:value-of select="vehiclemodel/vehicle/vendor"/>
    <xsl:value-of select="vehiclemodel/model/rank"/>
    <xsl:value-of select="vehiclemodel/vehicle/price"/>
  </car>

```

</xsl:template>

4E. XQL

Cannot be expressed.

COMMENTS

- In LOREL, the elements are extracted in the order in which they appear in the query. The query result is associated with an element named *car* by invoking the function *xml(car : querystring)*.
- XML-QL deals with the ordering of the result explicitly in the construct clause.
- In XML-GL, a new *< car >* element is introduced in the result and enriched with the corresponding sub-elements, which are ordered counterclock-wise by means of the graphic notation of marking one of the edges.
- In XSL, the template rule matches the **manufacturer** elements and constructs in the result, the new *car* tags filled with the appropriate sub-elements.
- In XQL, the query cannot be written, as it includes a join.
- Summary: this is less interesting, again it shows that join and ordering are feasible with LOREL, XML-QL, XML-GL, while joins are unfeasible with XSL and XQL.

4 Desired Qualities

Besides the comparative review of features, summarized in Table 1, we can briefly discuss the desired qualities of query languages, and propose a relative ranking of the five languages.

- *Declarativeness*. A query language is declarative when the specification of the query defines the content of the result rather than a strategy to compute it. According to the above definition, all the five query languages are declarative. LOREL resembles OQL and therefore a calculus-based language. XML-QL has variable unification as one of its ingredients and as such recalls a logic language, although with a very peculiar XML style. XML-GL recalls QBE. Both XSL and XQL make use of URL-like patterns extensively.
- *Expressive power*. Indicates how powerful is the language in expressing queries. From this perspective, XML-QL and LOREL are the two most powerful languages. According to the features that we have listed, LOREL is more powerful for what concerns the differential management of IDREFs, universal quantification, negation, aggregate management, abstract data types, type coercion, and updates; XML-QL enables predicates on tag ordering that are lacking in LOREL. Both languages lack of a reduction operation and of support for RDF, XPointers, and Xlinks, other emerging W3C standards. However, it appears that the missing features could be easily added to both languages so as to make them equally expressive. Then, the two languages would have comparable semantics embedded within

quite different syntaxes, as LOREL is OQL-like, while XML-QL queries resemble XML documents; we may say that XML-QL is XML-like.

XML-GL is less powerful than both the above languages, mainly because of the limitations in supporting nested queries, certain specified path expressions, and Skolem functions. However, the language supports what is naturally specified in a graphical formalism, and can be considered as a QBE-equivalent of the other two languages, in the sense that also QBE is less expressive than SQL in the relational world, however capturing the essential expressive power of relational languages.

XSL and XQL are quite comparable in their expressive power, and less expressive than the other languages.

XSL is a stylesheet language enabling a single document query language with transformation capabilities. It lacks joins, update operations and Skolem functions. But it allows, with respect to XQL, restructuring of documents.

Finally, XQL captures a restricted class of queries; its major limitations are the lack of support of joins and result construction. The class of queries supported by XQL are those relative to a single document being tested and projected out when the test is satisfied.

A visualization of the expressive power of languages is given in Figure 6.

- *Ease of use.* This property indicates how easy it is to write and/or to understand a query for an XML query programmer. From this perspective, XML-GL is easy to read and to understand, as it is associated to a graphic interface, while XQL is also simple and easy, but much less powerful; these two languages are the easiest to use. With respect to XQL, XSL is less readable because of the instruction tags and of the template rules. LOREL and XML-QL are comparable with respect to the ease of formulation, although database experts will be probably more familiar with the LOREL style, and XML experts will probably be more familiar with XML-QL. One should also notice, e.g. from the examples of Section 3, that XML-QL queries are rather verbose if compared with LOREL queries.

5 Conclusions: A Unified View

The five reviewed languages can be organized in a taxonomy, where:

- LOREL and XML-QL are the OQL-like and XML-like representatives of **Class 2 of expressive query languages for XML**, playing the same role as high-level SQL standards and languages (e.g., SQL2) in the relational world. Our study indicates that they need certain additions in order to become equivalent in power, in which case it would be possible to translate between them. Currently, a major portion of the queries that they accept can be translated from anyone language to another.
- XSL and XQL are representative of **Class 1 of single-document query languages**, playing the same role as core SQL standards and languages (e.g. the SQL supported by ODBC) in the relational world; they do not have joins. Their expressive power is included within the expressive power of Class

2 languages. Their rationale is to extract information from a single document, to be expressed as a single string and passed as one of the URL parameters.

- XML-GL can be considered as a **graphical query interface to XML**, playing the same role as graphical query interfaces (e.g., QBE) in the relational world. The queries being supported by XML-GL are the most relevant queries supported by Class 2 languages.

If the common features (as initially identified in this paper) will become fully understood, it is possible to envision a collection of translators between languages of the same class, and/or between languages of different classes, and/or from the graphic language XML-GL to the programmative languages of Classes 1 and 2. In this way, query languages for XML will constitute a language hierarchy similar to the one existing for relational and object-relational databases.

Acknowledgement

We like to acknowledge the suggestions and criticisms of Serge Abiteboul, Sara Comai, Jason McHugh, Yannis Papakonstantinou, Dan Suciu, Letizia Tanca and Jennifer Widom to an early presentation of this survey. We are particularly grateful to Jennifer and Jason for their extensive advices and significant contributions.

References

- [Abi99] S. Abiteboul. On Views and XML. In *Proc. ACM SIGMOD/SIGACT Conf. on Princ. of Database Syst. (PODS)*, Philadelphia, PA, May-June 1999.
- [AG*97] S. Abiteboul, R. Goldman, J. McHugh, V. Vassalos, and Y. Zhuge. Views for Semistructured Data. Proceedings of the Workshop on Management of Semistructured Data, Tucson, Arizona, May 1997.
- [AQ*97] S. Abiteboul, D. Quass, J. McHugh, J. Widom, and J. Wiener. The Lorel Query Language for Semistructured Data. *International Journal on Digital Libraries*, 1(1):68-88, April 1997.
- [B*99] A. Bonifati, S. Ceri, S. Comai, S. Paraboschi. Active Document Management with XML. Submitted to *EDBT 2000 (VII. Conference on Extending Database Technology)* to be held in Konstanz (Lake Constance), Germany, March 27-31, 2000.
- [C*99] S. Ceri, S. Comai, E. Damiani, P. Fraternali, S. Paraboschi and L. Tanca. XML-GL: a Graphical Language for Querying and Restructuring WWW Data. In *8th Int. World Wide Web Conference, WWW8*, Toronto, Canada, May 1999, www8.org/fullpaper.html.
- [C199a] J. Clark. XSL Transformations (XSLT specification), 1999, <http://www.w3.org/TR/WD-xslt>.
- [C199b] J. Clark. Xml Path Language (XPATH), 1999, <http://www.w3.org/TR/xpath>.

	LOREL	XML-QL	XML-GL	XSL	XQL
Specific data model	Yes	Yes	Yes	Yes	No
Differential mgmnt of IDREFs	Yes	No	No	No	No
Document selection	Yes	Yes	Yes	Yes	Yes
Joins	Yes	Yes	Yes	No	No
Semantics of result	Set of OIDs	XML Doc	XML Doc	XML Doc	XML Doc
Partially specified path expr.	Yes	Yes	Partially	Yes	Yes
Halt on matching cyclic data	Yes	Undefined	Yes	No	Undefined
Existential quantification	Yes	Yes	Yes	Yes	Yes
Universal quantification	Yes	No	No	No	Yes
Negation	Yes	No	Yes	Yes	Yes
Reduction	No	No	No	No	No
Construct new elements	Yes	Yes	Yes	Yes	No
Construct Groups	Yes	No	Yes	No	No
Skolem functions	Yes	Yes	Partially	No	No
Aggregates	Yes	No	Yes	Partially	Partially
Nested queries	Yes	Yes	No	Yes	No
Binary queries	Yes	Partially	Yes	Yes	Yes
Ordering the result	Yes	Yes	Yes	Yes	No
Order-preserving result	Yes	Yes	Yes	Yes	Yes
Querying the schema order	No	Yes	No	No	No
Querying the instance order	Yes	No	No	Yes	Yes
Abstract data types	Yes	No	No	No	No
Type coercion	Yes	No	No	No	Partially
Support of RDF	No	No	No	No	No
Support of XPointer & XLink	No	No	No	No	No
Tag variables	Yes	Yes	No	No	No
Update language	Yes	No	Yes	No	No

Table 1: Comparison table for XML query languages

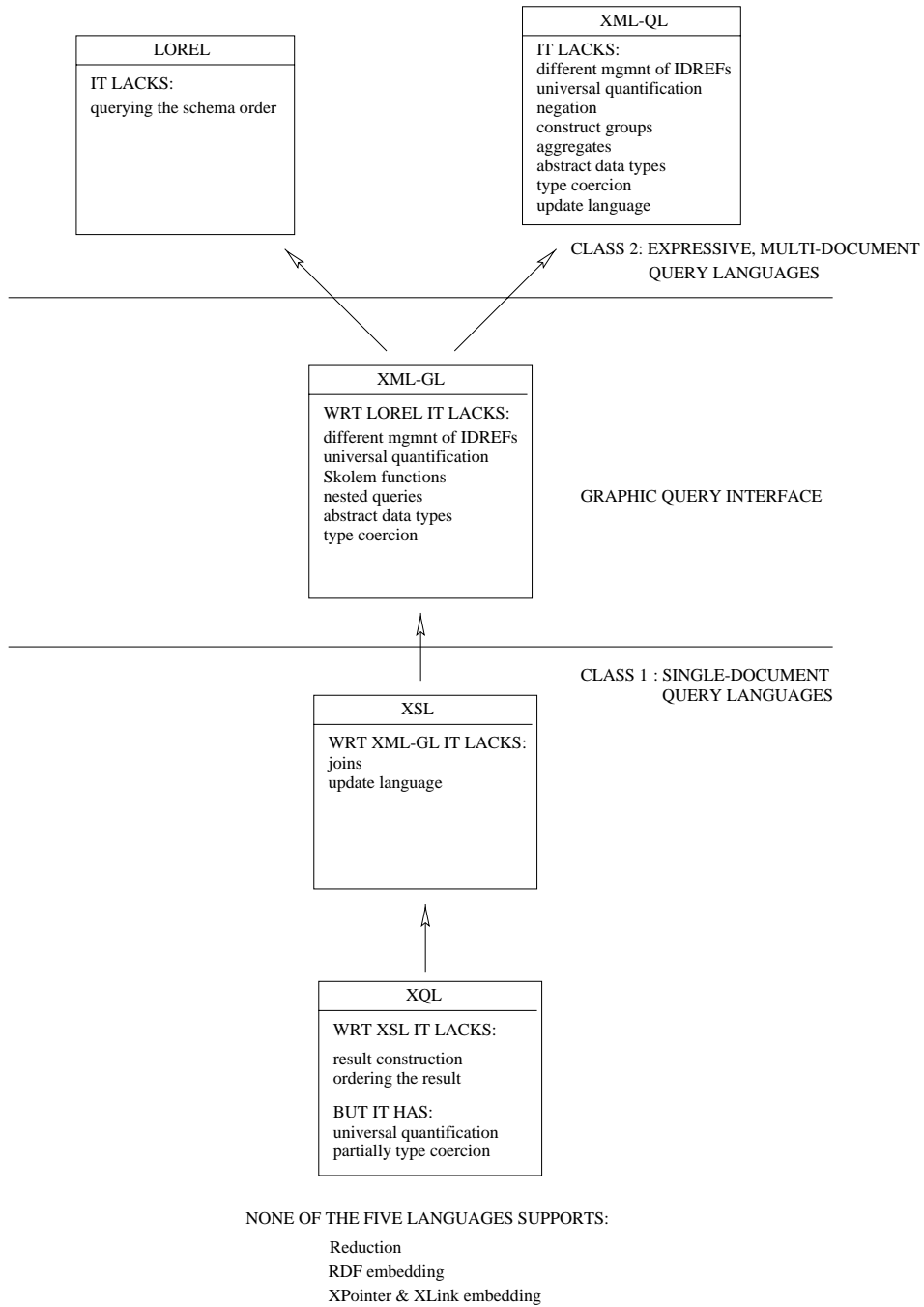


Figure 6: Summarization of the expressive power of the languages

- [DeR98] S. J. DeRose. XQuery: A Unified Syntax for Linking and Querying General XML. In *Proc. of the Query Languages workshop (QL98)*, Cambridge, Mass., December 1998, <http://www.w3.org/TandS/QL/QL98/pp/xquery.html>.
- [DF*98] A. Deutsch, M. Fernandez, D. Florescu, Alon Levy and D.Suciu. XML-QL: A Query Language for XML. In *Proc. of the Query Languages workshop(QL98)*, Cambridge, Mass., December 1998, <http://www.w3.org/TR/1998/NOTE-xml-ql-19980819/>.
- [DF*99] A. Deutsch, M. Fernandez, D. Florescu, Alon Levy and D.Suciu. A Query Language for XML. In *8th Int. World Wide Web Conference, WWW8*, Toronto, Canada, May 1999, www8.org/fullpaper.html.
- [DOM98] Document Object Model (DOM) Level 1 Specification. W3C recommendation, October 1998, <http://w3.org/TR/REC-DOM-Level-1/>.
- [GMW99] R. Goldman, J. McHugh, and J. Widom. From Semistructured Data to XML:Migrating the Lore Data Model and Query Language. To appear in Proceedings of the 2nd International Workshop on the Web and Databases (WebDB '99), Philadelphia, Pennsylvania, June 1999.
- [LP*99] B. Ludäscher, Y. Papakonstantinou, P. Velikhov and V. Vianu. View Definition and DTD Inference for XML. In *Post-ICDT Workshop on Query Processing for Semistructured Data and Non-Standard Data Formats*, Jerusalem, 1999, <http://www-rodin.inria.fr/external/ssd99/workshop.html>.
- [Mai98] D. Maier. Database desiderata for an XML Query Language. In *Proc. of the Query Languages workshop*, Cambridge, Mass., Dec. 1998, <http://www.w3.org/TandS/QL/QL98/pp/maier.html>.
- [Qua98] D. Quass. Ten Features Necessary for an XML Query Language. In *Proc. of the Query Languages workshop*, Cambridge, Mass., Dec. 1998, <http://www.w3.org/TandS/QL/QL98/pp/quass.html>.
- [RLS98] J. Robie, J. Lapp and D. Schach. XML Query Language (XQL). In *Proc. of the Query Languages workshop*, Cambridge, Mass., Dec. 1998, <http://www.w3.org/TandS/QL/QL98/pp/xql.html>.
- [Ro99a] J. Robie. XQL FAQ. <http://metalab.unc.edu/xql/>.
- [Ro99b] J. Robie. XQL Tutorial. <http://metalab.unc.edu/xql/xql-tutorial.html>.
- [Ro99c] J. Robie. The design of XQL. <http://www.w3.org/Style/XSL/Group/1998/09/XQL-design.html>.
- [SLR98] D. Schach, J. Lapp, J. Robie. Querying and Transforming XML. In *Proc. of the Query Languages workshop*, Cambridge, Mass., Dec.1998, <http://www.w3.org/TandS/QL/QL98/pp/query-transform.html>.
- [Suc99] D. Suciu. Managing Web Data. A Tutorial presented at *ACM SIGMOD/SIGACT Conference*, Philadelphia, PA, May-June 1999.
- [XML98] Extensible Markup Language (XML) 1.0. W3C recommendation, February 1998, <http://www.w3.org/TR/REC-xml>.

- [XSL99] Extensible Stylesheet Language Specification. W3C Working Draft, 21 Apr 1999, <http://www.w3.org/TR/WD-xsl/>.
- [W*98] W3C XSL Working Group. The Query Language Position Paper of the XSL Working Group. In *Proc. of the Query Languages workshop*, Cambridge, Mass., Dec. 1998, <http://www.w3.org/TandS/QL/QL98/pp/xsl-wg-position.html>.